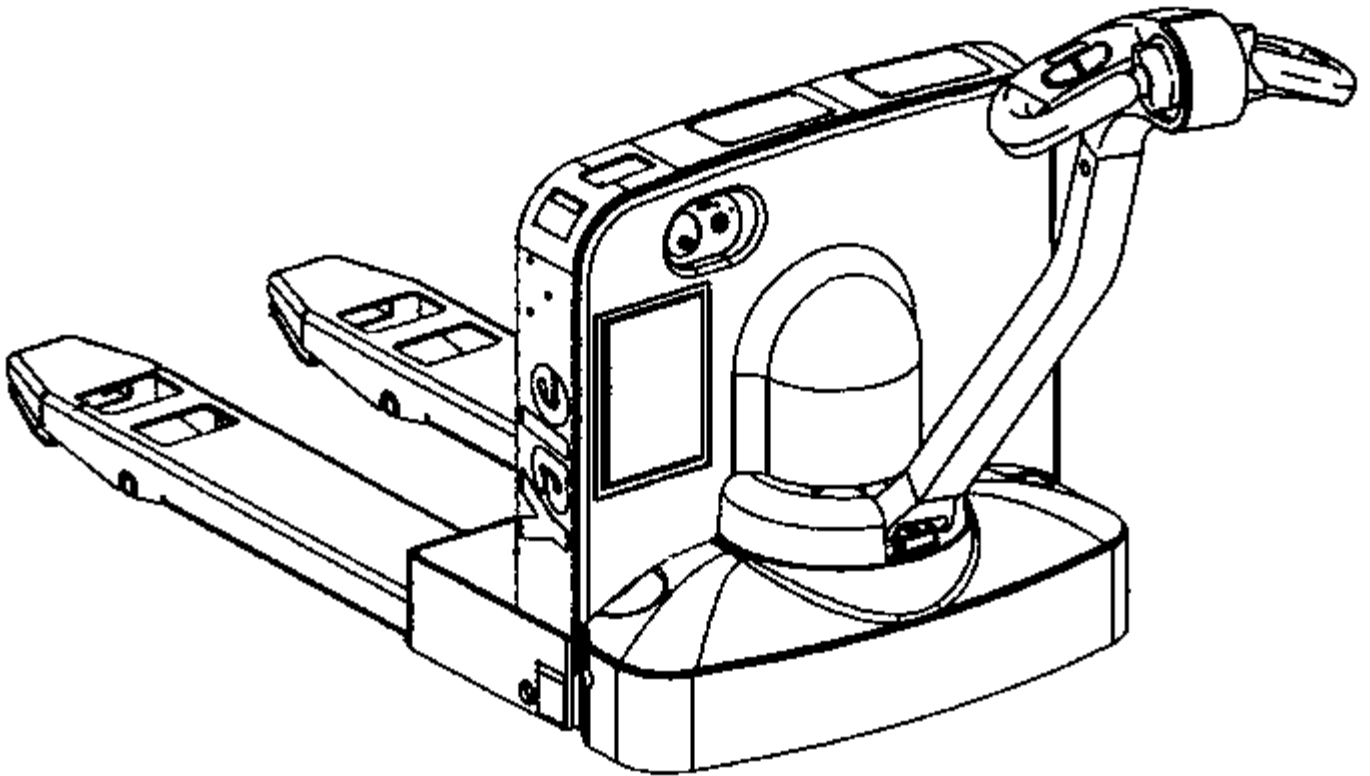
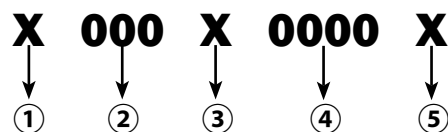


Replacement Parts
for
Hyster W40Z (B218)
Hyster W45Z (C215)



Truck Data Nomenclature

Truck Serial # (Stamped on Frame)



- ①② First letter and next three numbers indicate truck unit code.
- ③ Second letter indicates Plant of manufacturer.
- ④ Four or five digit number indicates production sequence.
- ⑤ Final letter indicates year of manufacturer (see list on right).

Note: Serial number breakdown applies only to trucks built after 1994.

| | |
|------|---|
| 1980 | A |
| 1981 | B |
| 1982 | C |
| 1983 | D |
| 1984 | E |
| 1985 | F |
| 1986 | G |
| 1987 | H |
| 1988 | J |
| 1989 | K |
| 1990 | L |
| 1991 | M |
| 1992 | N |
| 1993 | P |
| 1994 | R |
| 1995 | S |
| 1996 | T |
| 1997 | U |
| 1998 | V |
| 1999 | W |
| 2000 | X |
| 2001 | Y |
| 2002 | Z |
| 2003 | A |
| 2004 | B |
| 2005 | C |
| 2006 | D |
| 2007 | E |
| 2008 | F |
| 2009 | G |
| 2010 | H |
| 2011 | J |
| 2012 | K |
| 2013 | L |
| 2014 | M |
| 2015 | N |
| 2016 | P |
| 2017 | R |
| 2018 | S |
| 2019 | T |
| 2020 | U |
| 2021 | V |
| 2022 | W |
| 2023 | X |
| 2024 | Y |
| 2025 | Z |

Contents

| | |
|--|----|
| Wheels | |
| Quick Wheel Lookup | 4 |
| <hr/> | |
| Electrical | |
| Battery Tray and Charger | 6 |
| Control Panel | 8 |
| <hr/> | |
| Drive Unit/Brake | |
| Drive Unit and Brake | 10 |
| <hr/> | |
| Motors | |
| Drive and Pump Motors | 12 |
| <hr/> | |
| Tiller Arm | |
| | 14 |
| <hr/> | |
| Control Handle Head | |
| | 16 |
| <hr/> | |
| Hydraulic | |
| | 18 |
| <hr/> | |
| Load Wheel and Lift Linkage | |
| | 20 |
| <hr/> | |
| Caster Assembly - Skid Bar | |
| | 22 |
| <hr/> | |

Quick Wheel Lookup

Quick Wheel Lookup

[back to Contents](#)

| OEM # | Wheel Type | Description | in/mm | Wheel OD in/mm | Tread Width in/mm | Bearing OD # | Bearing Material/Color |
|--------------------------------|--------------------|---|----------|----------------|-------------------|----------------|------------------------------|
| HY 2081800 | Load Wheel | Load Wheel Assembly, with Shielded Bearings & String Guards, 95-A | 3.250/83 | 4.500/114 | 2.047/52 | BS 6205-ZZ | Scotch, 95-A, Polyurethane |
| HY 2081796 | Load Wheel | Load Wheel Assembly, with Sealed Bearings & String Guards, 95-A | 3.250/83 | 4.500/114 | 2.047/52 | BS 6205-2RS | Scotch, 95-A, Polyurethane |
| HY 4609399 | Load Wheel | Load Wheel Assembly, with Stainless Steel Bearing & String Guards, 95-A | 3.250/83 | 4.500/114 | 2.047/52 | BS 6205-2RS-SS | Scotch, 95-A, Polyurethane |
| HY 2081800-XL | Load Wheel | Load Wheel Assembly, with Shielded Bearings & String Guards, 97-A | 3.250/83 | 4.500/114 | 2.047/52 | BS 6205-ZZ | Cream, 97-A, Polyurethane |
| HY 2081796-XL | Load Wheel | Load Wheel Assembly, with Sealed Bearings & String Guards, 97-A | 3.250/83 | 4.500/114 | 2.047/52 | BS 6205-2RS | Cream, 97-A, Polyurethane |
| HY 4609399-XL | Load Wheel | Load Wheel Assembly, with Stainless Steel Bearing & String Guards, 97-A | 3.250/83 | 4.500/114 | 2.047/52 | BS 6205-2RS-SS | Cream, 97-A, Polyurethane |
| HY 800127595 | Load Wheel | Load Wheel Assembly, with String Guards and Axle | | | | | |
| GWK-W40Z-LW | Load Wheel Kit | (2) Poly Load Wheel Assemblies, with (2) Axles and Fasteners | 3.250/83 | 4.500/114 | 2.047/52 | BS 6205-2RS | Scotch, 95-A |
| GWK-W40Z-LW-XL | Load Wheel Kit | (2) XL-Poly Load Wheel Assemblies, with (2) Axles and Fasteners | 3.250/83 | 4.500/114 | 2.047/52 | BS 6205-2RS | Cream, 97-A |
| GWK-W45Z-LW | Load Wheel Kit | (2) Poly Load Wheel Assemblies, with (2) Axles and Fasteners | 3.250/83 | 4.500/114 | 2.047/52 | BS 6205-2RS | Scotch, 95-A |
| GWK-W45Z-LW-XL | Load Wheel Kit | (2) XL-Poly Load Wheel Assemblies, with (2) Axles and Fasteners | 3.250/83 | 4.500/114 | 2.047/52 | BS 6205-2RS | Cream, 97-A |
| HY 2108789 | Riser & Load Wheel | Complete Riser & Load Wheel Assembly, 95-A | | | | | Scotch, 95-A, Polyurethane |
| HY 2108789-XL | Riser & Load Wheel | Complete Riser & Load Wheel Assembly, 97-A | | | | | Cream, 97-A, Polyurethane |
| HY 2309963 | Rubber Drive Tire | Rubber Drive Tire, Smooth Flat | 9.00/229 | 5.00/127 | | | Black Rubber |
| HY 2309963-XG | Rubber Drive Tire | Rubber Drive Tire, X Groove | 9.00/229 | 5.00/127 | | | Black Rubber |
| HY 2082237 | Rubber Drive Tire | Rubber Drive Tire Assembly, Smooth Flat With Hub | 9.00/229 | 5.00/127 | | | Black Rubber |
| HY 2082237-XG | Rubber Drive Tire | Rubber Drive Tire Assembly, X Groove With Hub | 9.00/229 | 5.00/127 | | | Black Rubber |
| HY 2094227 | Poly Drive Tire | Poly Drive Tire, Smooth Flat | 9.00/229 | 5.00/127 | | | Black, 88-92-A, Polyurethane |
| HY 2094227-XG | Poly Drive Tire | Poly Drive Tire, X Groove | 9.00/229 | 5.00/127 | | | Black, 88-92-A, Polyurethane |
| HY 2086274 | Poly Drive Tire | Poly Drive Tire Assembly, Smooth Flat With Hub | 9.00/229 | 5.00/127 | | | Black, 88-92-A, Polyurethane |
| HY 2086274-XG | Poly Drive Tire | Poly Drive Tire Assembly, X Groove With Hub | 9.00/229 | 5.00/127 | | | Black, 88-92-A, Polyurethane |
| HY 2082486 | Wheel Hub | Drive Tire Hub | | | | | |



[HY 800127595](#)
Load Wheel Assembly w/String Guards and Axle



[HY 2108789](#)
Complete Riser and Load Wheel Assembly



[GWK-W40Z-LW](#)
Load Wheel Assembly Kit w/Bearings, Axles and Fasteners

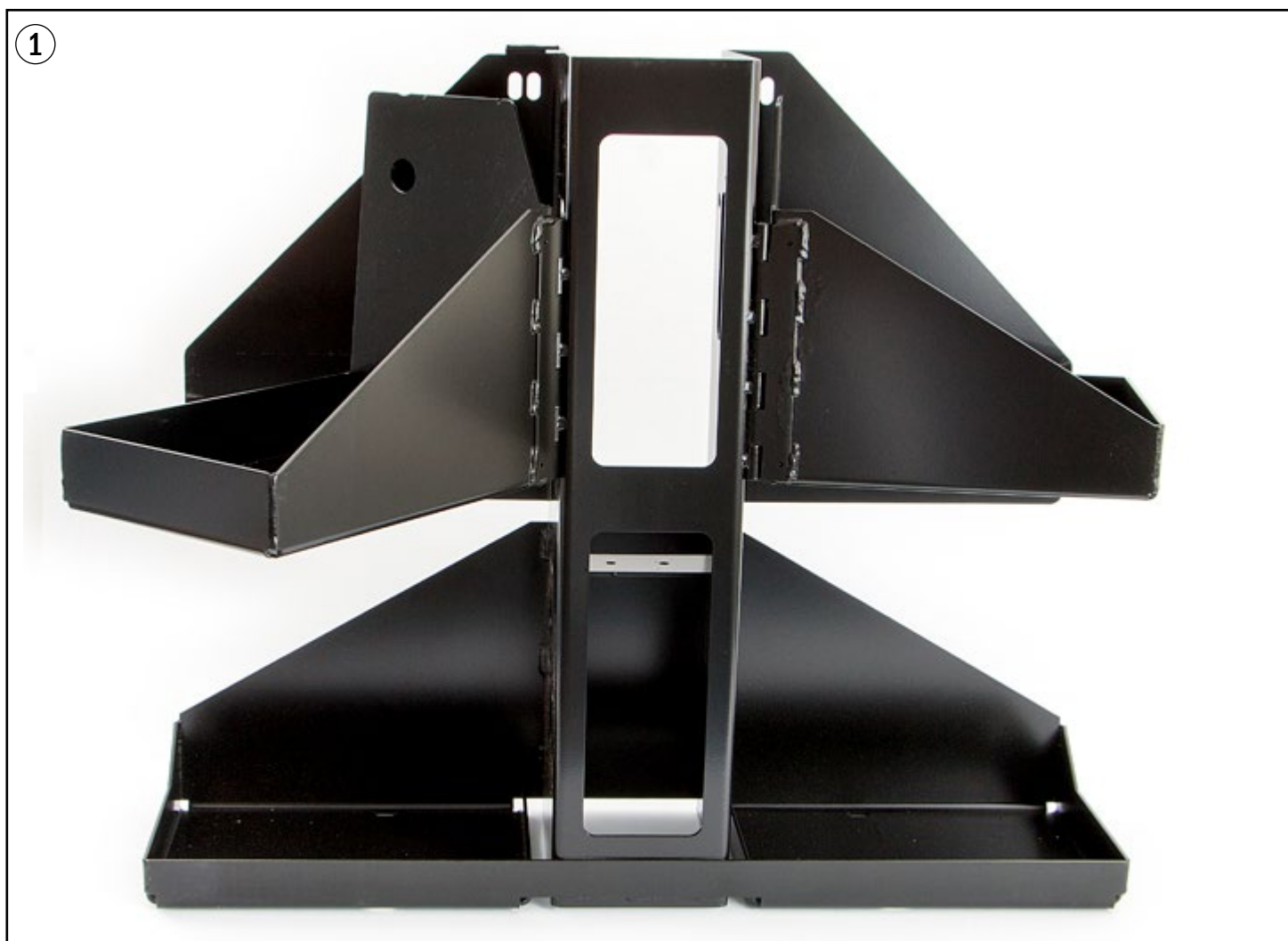


[HY 2082237](#)
Rubber Drive Tire w/Hub

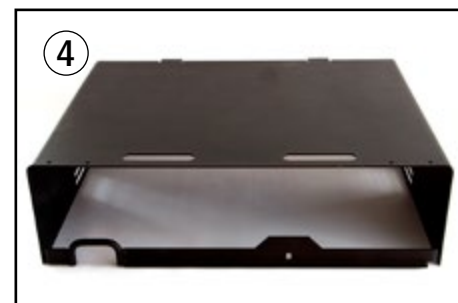
Electrical - Battery Tray and Charger

Electrical - Battery Tray and Charger

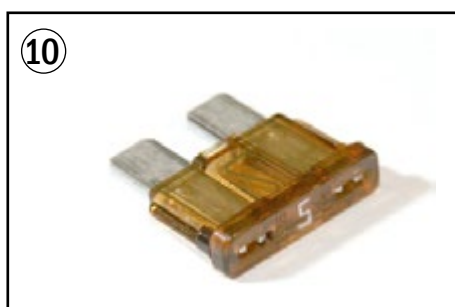
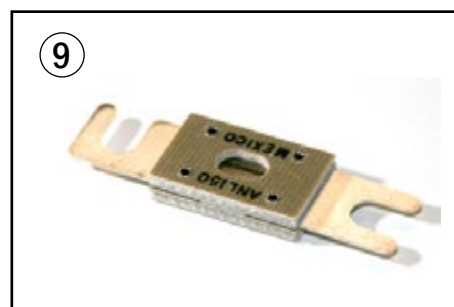
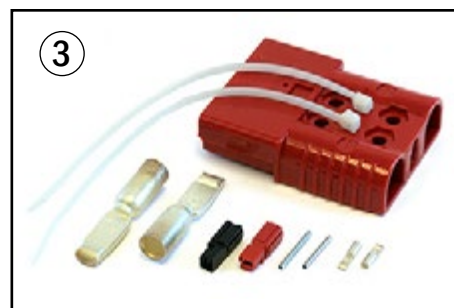
[back to Contents](#)



| Item | Part No. | Date/Serial Range | Description |
|------|------------|---------------------------|---|
| 1 | HY 2048103 | | Battery Tray |
| 2 | HY 2048079 | Thru 9/2002 | Battery Charger, 24V,120vac, Micro Control |
| | HY 2054228 | 10/2002 thru 4/2005 | Battery Charger, 24V,120vac, Micro Control |
| | HY 2073416 | 4/2005 thru 11/2007 | Battery Charger, 24V,120vac, Micro Control |
| | HY 2102631 | 12/2007 thru B218N18159G | Battery Charger, 24V,120vac, Micro Control |
| | HY 4603626 | B218N18160G & B218N26948L | Battery Charger, 24V,120vac, Micro Control |
| 3 | HY 4075488 | B218N26949L & UP | Battery Charger, 24V,120vac (AGM Battery) |
| | HY 4075269 | B218N26949L & UP | Battery Charger, 24V,120vac (Flooded Battery) |
| 4 | HY 2056730 | | Battery Cover |
| 5 | HY 2058202 | | Utility Cover (Battery Cover) |
| 6 | HY 2078580 | | Knob |
| 7 | HY 61853 | | Fuse, 10 Amp |



Electrical - Control Panel



Electrical - Control Panel

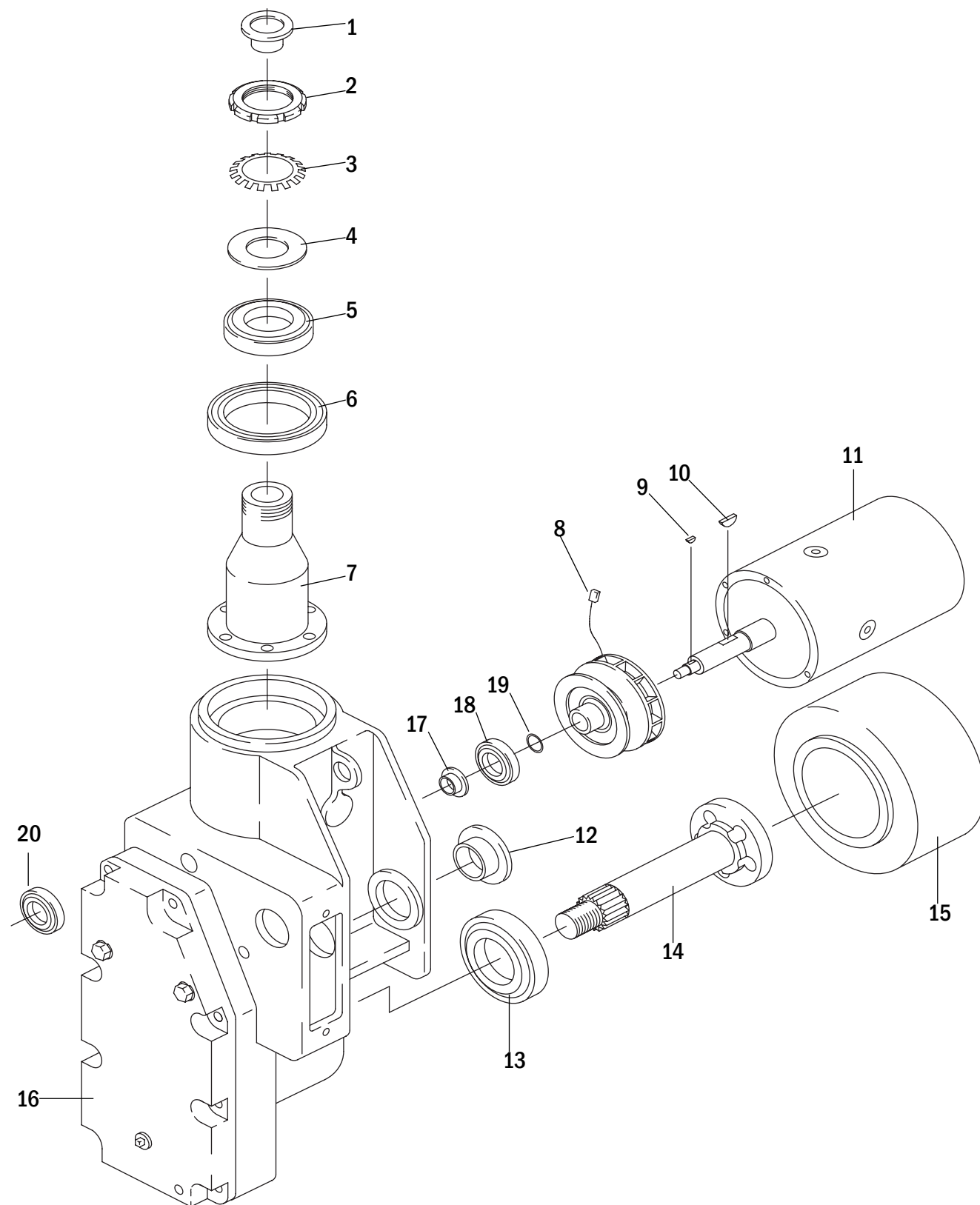
[back to Contents](#)

| Item | Part No. | Date/Serial Range | Description |
|------|---------------|-------------------|---|
| 1 | HY 2050771 | | Battery Cable & Red Connector (To Batteries) |
| 2 | HY 2045946 | | Battery Connector Red with Cable (To Panel) |
| 3 | HY 2059313 | | SBX 175 Amp Connector, Red |
| 4 | AN 6384G1 | | SBX Contacts, 175 Amp (Set of Two) |
| 5 | HY 4611682-R | W40Z / B218 | Controller, 24 Volt, Remanufactured |
| | HY 4611682-C | W40Z / B218 | Core Deposit |
| | HY 2046533-R | W45Z / C215 | Controller, 24 Volt, Remanufactured |
| | HY 2046533-C | W45Z / C215 | Core Deposit |
| 6 | HY 254007 | | AM Replacement, will not work w/ OEM keys. |
| | HY 254007-OEM | | OEM Replacement, will work w/ OEM keys |
| 7 | HY 262798 | | Keys, Set of (2) |
| 8 | HY 2046546 | | Battery Discharge Indicator with Wire Harness |
| 9 | HY 2053654 | | Fuse, 175 Amp |
| 10 | HY 370646 | | Fuse, 5 Amp |
| 11 | HY 2042675 | | Horn, Safe-T-Alert, 2000 Series, 12-24V, 102 DB |
| 12 | HY 2047721 | | Main Wiring Harness, 24 Volt |
| 13 | HY 2038652 | | Ground Static Strap |
| 14 | HY 2054270 | W40Z / B218 | Contactor, 24 Volt (S/N B218) |
| | HY 2046797 | W45Z / C215 | Contactor, 24 Volt (S/N C215) |

Drive Unit and Brake Assembly

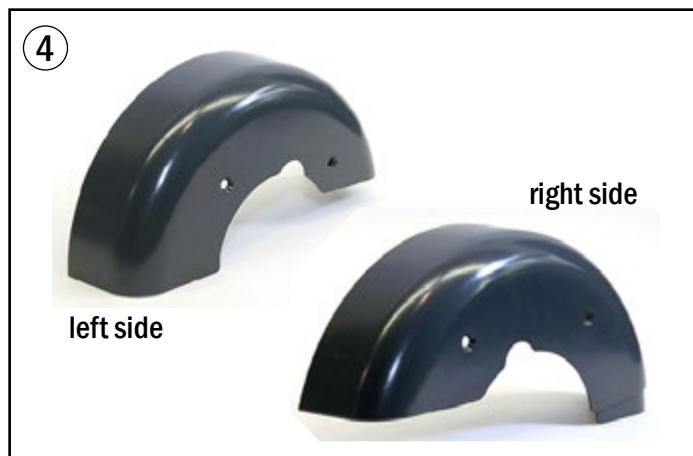
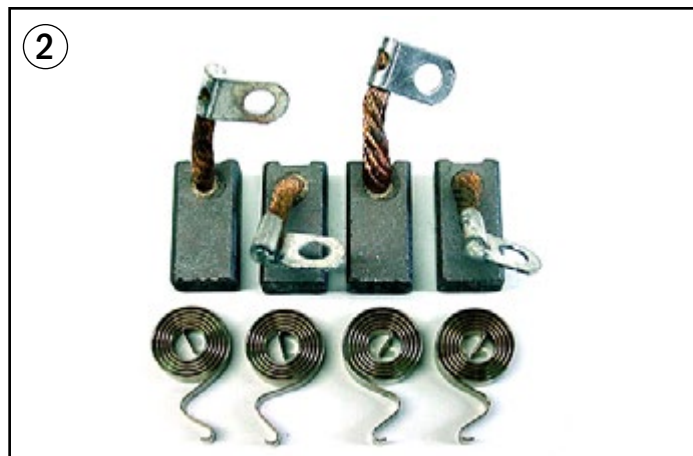
Drive Unit and Brake Assembly

[back to Contents](#)



| Item | Part No. | Description |
|------|------------------------|---|
| 1 | HY 2307321 | Sleeve |
| 2 | HY 2050733 | Nut |
| 3 | HY 2050732 | Lockwasher |
| 4 | HY 2048081 | Seal |
| 5 | HY 1375474 | Bearing Set |
| 6 | HY 1507273 | Bearing Set |
| 7 | HY 2048043 | Spindle |
| 8 | HY 2046003 | Brake Assembly |
| 9 | HY 2310849 | Woodruff Key |
| 10 | HY 2051303 | Key |
| 11 | | See Motor Section (Page 12) |
| 12 | HY 2791987 | Bushing |
| 13 | HY 163971 HY 174230 | Bearing Cup Bearing Cone |
| 14 | HY 2304321 | Drive Axle |
| 15 | | See Quick Wheel Lookup Section (Page 4) |
| 16 | HY 2051304 | Drain Plug |
| 17 | HY 2059341 | Spacer (Oil Flinger) |
| 18 | HY 128450 | Bearing |
| 19 | HY 39382 | O-Ring |
| 20 | HY 43203 | Bearing |

Motors



Motors

[back to Contents](#)

| Item | Part No. | Date/Serial Range | Description |
|------|---------------|-------------------|---|
| 1 | HY 2049316 | | Traction Motor, 24 Volt, After-Market |
| 2 | HY 1506791-AM | | Traction Motor Brush & Spring Set, After-Market Motor |
| 3 | HY 1506791 | | Traction Motor Brush & Spring Set, OEM Motor |
| 4 | HY 1537410 | | Motor Cover, Right Hand Side |
| | HY 1537409 | | Motor Cover, Left Hand Side |
| 5 | HY 1466025 | B218 | Pump Motor, 24 Volt, After-Market Replacement (B827) |
| | HY 1506120 | C215 | Pump Motor, 24 Volt, After-Market Replacement (B802) |

Tiller Arm

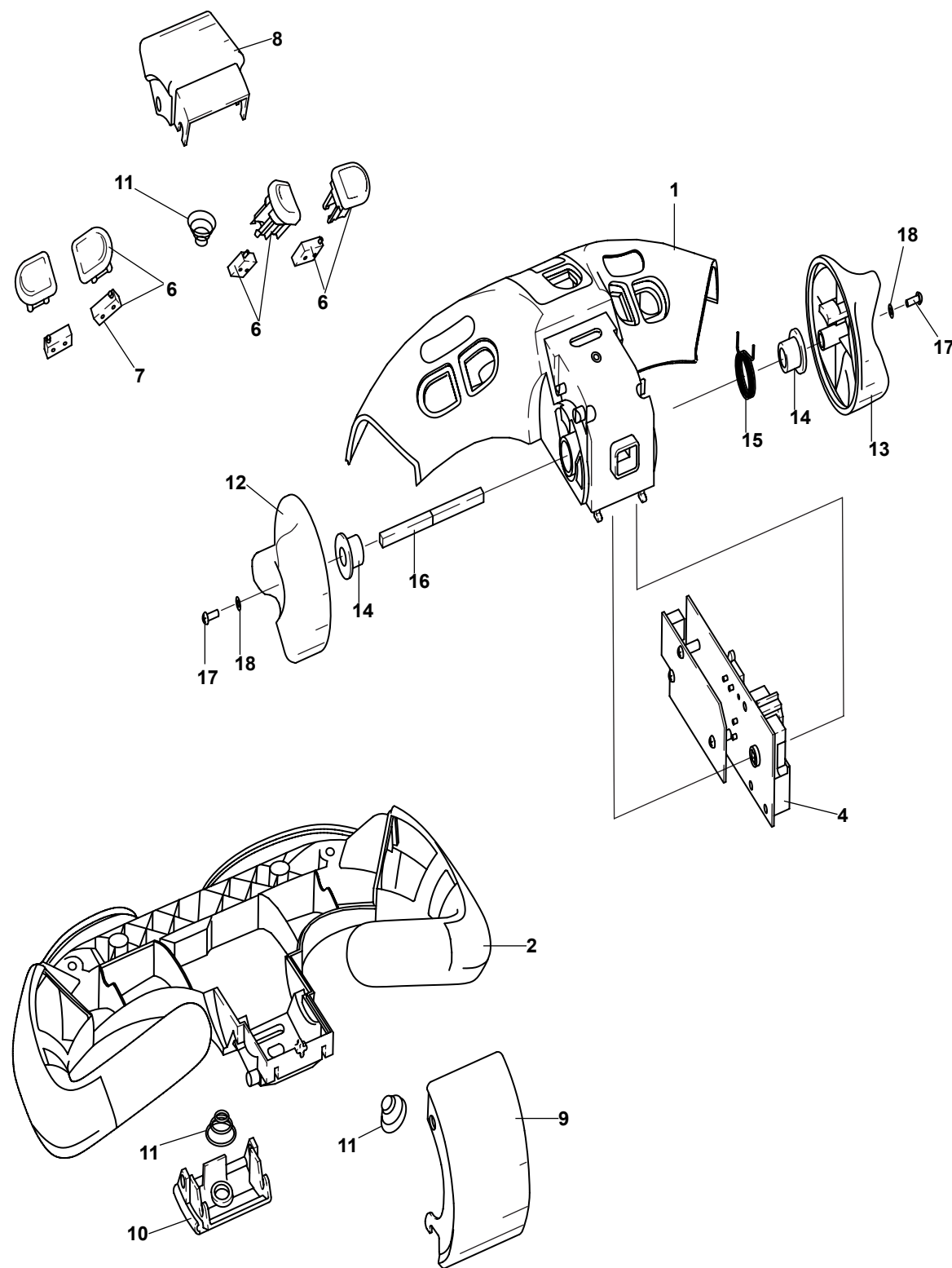


Tiller Arm

[back to Contents](#)

| Item | Part No. | Date/Serial Range | Description |
|------------|-----------------------------------|-----------------------------------|--------------------------------|
| 1 | HY 2050082 | Up to S/N B218N18567G | Tiller Handle Arm |
| | HY 4009141 | Begin S/N B218N18568G & Later | Tiller Handle Arm |
| 2 | HY 2050083 | Thru S/N B218N03170A | Gas Spring, W40Z, Cold Storage |
| | | Thru S/N B218N03330A | Gas Spring, W40Z, Standard |
| | | Thru S/N C215N01669A | Gas Spring, W45Z |
| | HY 2059967 | S/N B218N03171A - S/N B218N05460B | Gas Spring with Wiper, W40Z |
| | | S/N B218N03331A - S/N B218N05460B | Gas Spring with Wiper, W40Z |
| HY 2066312 | S/N C215N01670A - S/N C215N01888B | Gas Spring with Wiper, W45Z | |
| | S/N B218N05461B - S/N B218N15399F | Gas Spring, W40Z | |
| | S/N C215N01889B & Later | Gas Spring, W45Z | |
| HY 2098777 | S/N B218N15400F & Later | Gas Spring, W40Z | |
| 3 | HY 302375 | Up to S/N B218N18567G | Pin |
| | HY 302380 | Begin S/N B218N18568G & Later | Pin |
| 4 | HY 2077505 | | Proximity Sensor |
| 5 | HY 2066432 | | Wire Harness, Tiller Handle |
| 6 | HY 2792053 | | Pin, Tiller Pivot (2 Required) |
| 7 | HY 2791931 | | Washer (2 Required) |
| 8 | HY 2050084 | | Bumper (2 Required) |
| 9 | HY 302043 | Up to S/N B218N18567G | Screw |
| | HY 302045 | Begin S/N B218N18568G & Later | Screw |
| 10 | HY 292680 | | Washer |
| 11 | HY 177599 | Up to S/N B218N18567G | Clamp |
| | HY 1486566 | Begin S/N B218N18568G & Later | Clamp |
| 12 | HY 296166 | Units Built Before 2005 | Cap screw |
| | HY 1510114 | Units Built 2006 & Later | Bolt |
| | HY 4035852 | Units Built 2006 & Later | Nut |
| 13 | HY 320157 | | Lock Washer |
| 14 | HY 292681 | | Washer |
| 15 | HY 2792378 | | Screw |
| 16 | HY 2008715 | | Plug (Not Shown) |

Control Handle Head



Control Handle Head

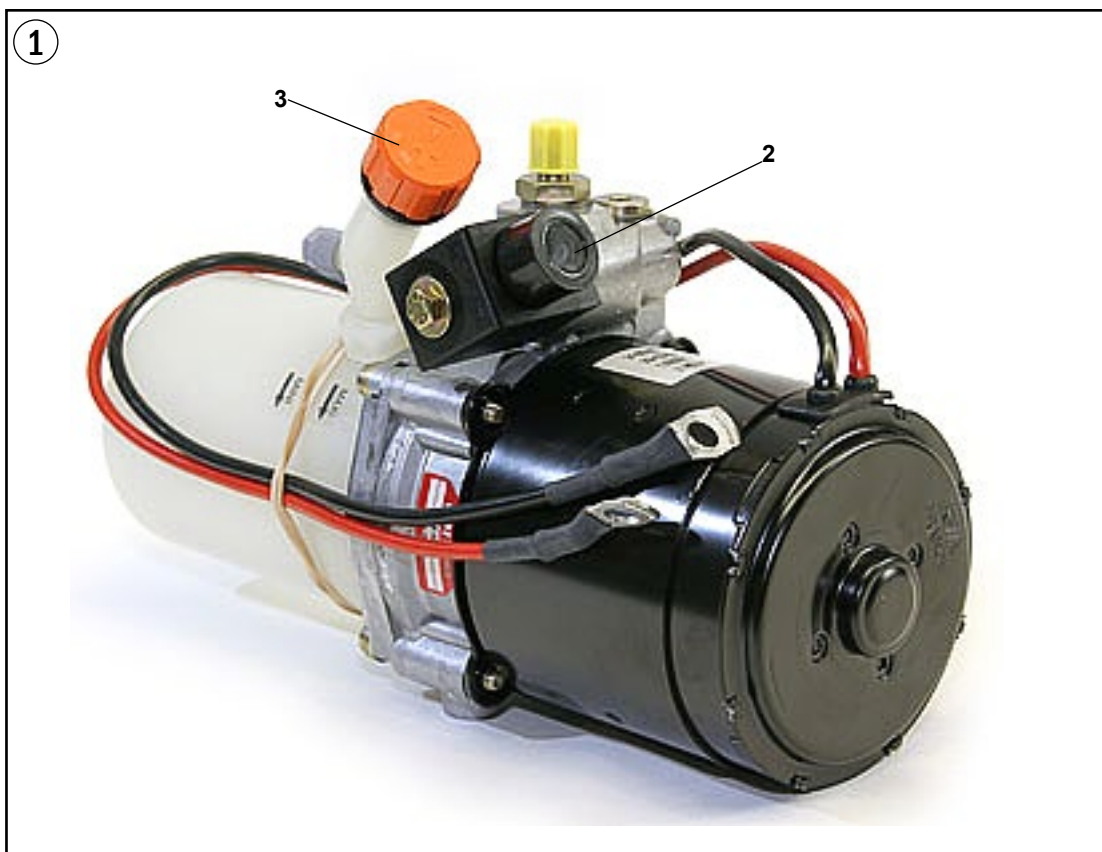
[back to Contents](#)

| Item | Part No. | Date/Serial Range | Description |
|------|--------------|---------------------|---|
| | HY 1494881 | | Tiller Head Assembly |
| 1 | HY 2045501 | | Control Handle, Upper |
| 2 | HY 1467778 | Thru 11/2003 | Control Head, Lower |
| | HY 2060004 | 12/2003 thru 4/2009 | Control Head, Lower |
| | HY 2111838 | Begin 5/2009 | Control Head, Lower |
| 3 | YL 550010160 | | Handle Upgrade Kit, Metal Grip (not shown) |
| 4 | HY 1498101-R | Thru 09/2005 | Interface Board, Renewed |
| | HY 1498101-C | | Core Deposit |
| | HY 1644784-R | 09/2005 and Later | Interface Board, Renewed |
| | HY 1644784-C | | Core Deposit |
| 6 | HY 1466877 | | Switch Assembly, Two Wire, RH & LH |
| 7 | HY 1498102 | | Microswitch, ON/Off Switch with Molex Connector |
| 8 | HY 1489471 | | Horn Cover |
| 9 | HY 1467779 | | Cover, Belly Switch |
| 10 | HY 1467780 | Thru 09/2005 | Cover, Turtle Option |
| | HY 1491262 | 09/2005 and Later | Cover, Turtle Option |
| 11 | HY 1531075 | | Spring (Belly/Horn/Turtle) |
| 12 | HY 1600593 | | Buttlerfly Switch, Left Hand |
| 13 | HY 1600592 | | Buttlerfly Switch, Right Hand |
| 14 | HY 1466595 | | Bushing, Buttlerfly Switch |
| 15 | HY 1594131 | | Spring, Throttle |
| 16 | HY 1466935 | | Camshaft, Directional Control |
| 17 | HY 1499660 | | Cap Screw |
| 18 | HY 320152 | | Washer |

Hydraulics

Hydraulics

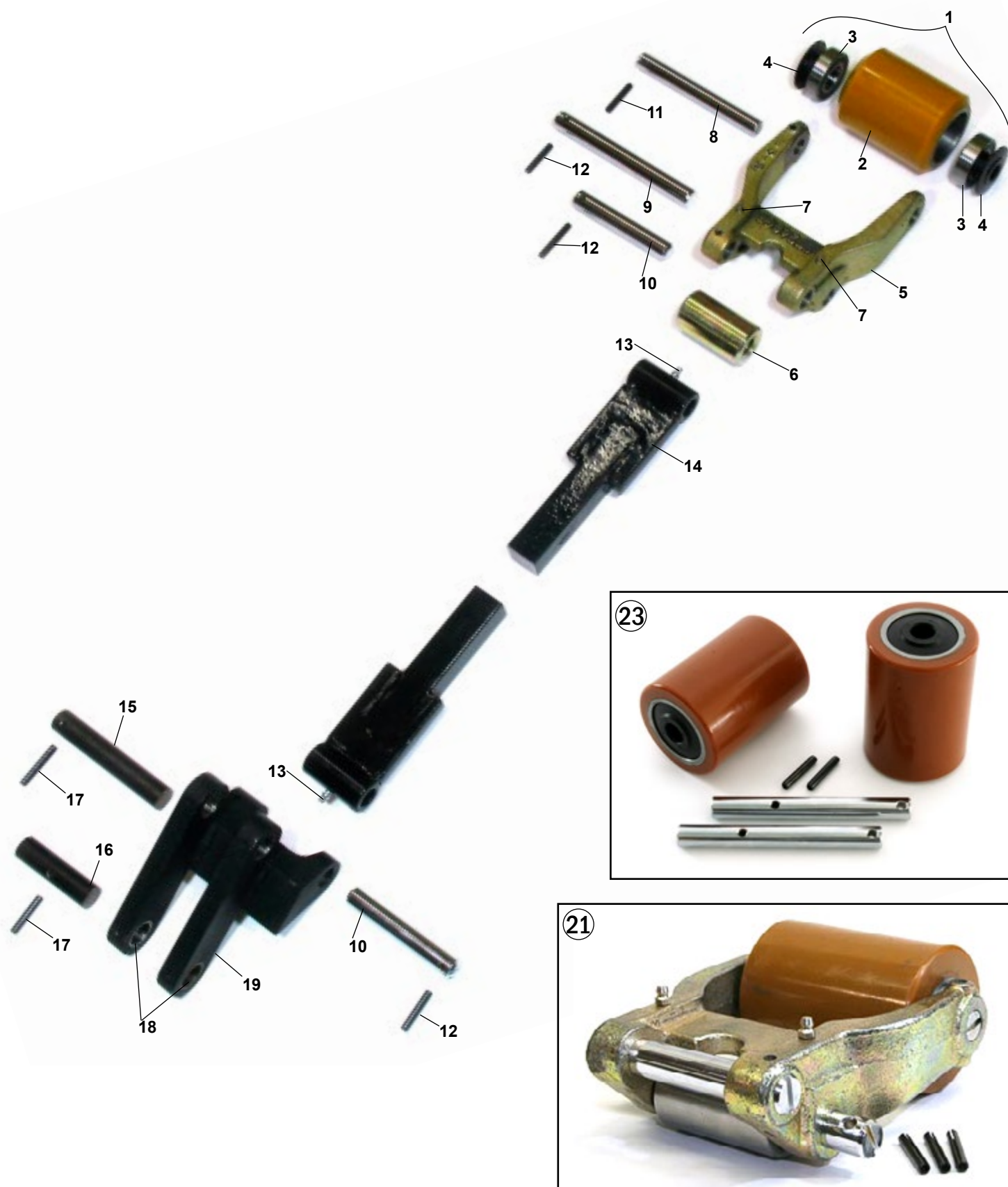
[back to Contents](#)



| Item | Part No. | Date/Serial Range | Description |
|------|------------|-------------------|---|
| 1 | HY 2046104 | Series B218, W40Z | Hydraulic Power Unit |
| | HY 2046133 | Series C215, W45Z | Hydraulic Power Unit |
| | | | Hydraulic Motor See Motor Section (Page 12) |
| 2 | HY 1584237 | | Solenoid Valve |
| 3 | HY 388712 | | Breather |
| 4 | HY 2046539 | | Lift Cylinder |
| 5 | HY 2048665 | | Seal Kit, Lift Cylinder |
| 6 | HY 2302339 | | Hose |
| 7 | HY 16987 | | Fitting, Hose to Pump Body |
| 8 | HY 2048094 | | Fitting, Hose to Cylinder |
| 9 | HY 2070336 | | Tube (Not Shown) |
| 10 | HY 2309185 | | Fitting, Tube to Cylinder |



Load Wheel & Lift Linkage



Load Wheel & Lift Linkage

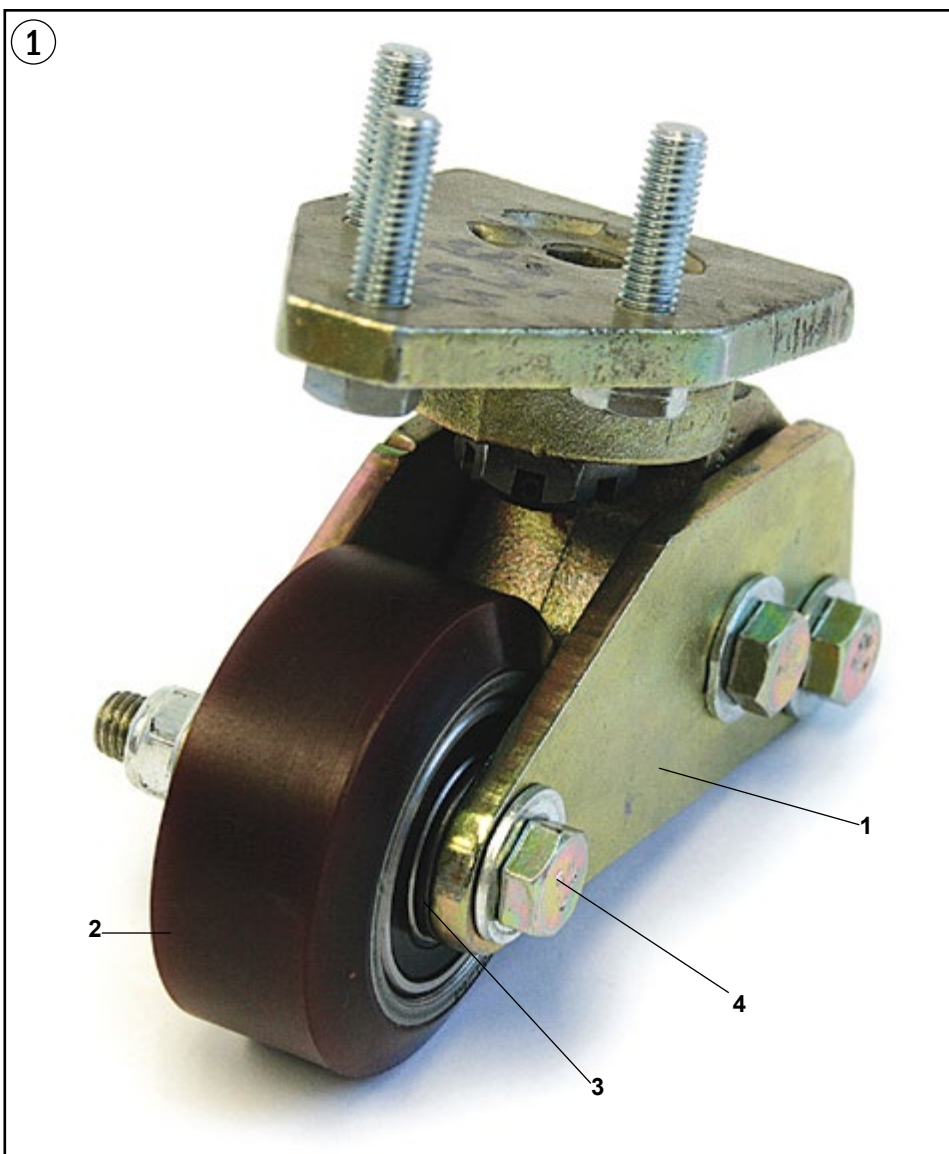
[back to Contents](#)

| Item | Part No. | Description |
|------|-----------------|---|
| 1 | HY 2081800 | Load Wheel Assembly, with Shielded Bearings & String Guards, 95-A |
| | HY 2081796 | Load Wheel Assembly, with Sealed Bearings & String Guards, 95-A |
| | HY 4609399 | Load Wheel Assembly, with Sainless Steel Bearing & String Guards,95-A |
| | HY 2081800-XL | Load Wheel Assembly, with Shielded Bearings & String Guards, 97-A |
| | HY 2081796-XL | Load Wheel Assembly, with Sealed Bearings & String Guards, 97-A |
| | HY 4609399-XL | Load Wheel Assembly, with Stainless Steel Bearing & String Guards,97-A |
| 2 | HY 2046054 | Poly Load Wheel, Poly 95-A |
| | HY 4609400 | Poly Load Wheel, Poly 97-A |
| 3 | HY 2045989 | Wheel Bearing, Rubber Seals |
| | HY 2046055 | Wheel Bearing, Metal Shields |
| | HY 4609401 | Wheel Bearing, Stainless Steel |
| 4 | HY 2046056 | Bushing, String guard |
| | HY 2046053 | Riser Bracket |
| | HY 2081792 | Riser Bracket |
| 6 | HY 2307475 | Steel Exit Roller |
| 7 | HY 2045923 | Lube Fitting |
| 8 | HY 2081802 | Load Wheel Axle, Freezer/Corrosion Resistant |
| 9 | HY 2072210 | Pivot Pin, Freezer/Corrosion Resistant |
| 10 | HY 2072211 | Pivot Pin, Freezer/Corrosion Resistant |
| 11 | HY 2046059 | Spiral Pin |
| 12 | HY 2050087 | Spiral Pin |
| 13 | HY 2040833 | Lube Fitting |
| 14 | HY 2085540 | Push Rod, 48" Fork Length |
| 15 | HY 2072208 | Pivot Pin, Freezer/Corrosion Resistant |
| 16 | HY 2072207 | Pivot Pin, Freezer/Corrosion Resistant |
| 17 | HY 2050088 | Spiral Pin |
| 18 | HY 2039225 | Bushing |
| 19 | HY 2050085 | Lower Rear Link, Right Hand Side |
| 20 | HY 2050086 | Lower Rear Link, Left Hand Side (not shown) |
| 21 | HY 2043251 | Complete Riser Assembly with Load Wheel Assembly, 95-A |
| | HY 2043251-XL | Complete Riser Assembly with Load Wheel Assembly, 97-A |
| 22 | HY 800127595 | Poly Load Wheel & Axle Assembly, 95-A |
| | HY 800127595-XL | Poly Load Wheel & Axle Assembly, 97-A |
| 23 | GWK-W40Z-LW | Load Wheel Kit: (2) Poly Load Wheel Assemblies, with (2) Axles and Fasteners |
| | GWK-W40Z-LW0XL | Load Wheel Kit: (2) XL-Poly Load Wheel Assemblies, with (2) Axles and Fasteners |
| | GWK-W45Z-LW | Load Wheel Kit: (2) Poly Load Wheel Assemblies, with (2) Axles and Fasteners |
| | GWK-W45Z-LW-XL | Load Wheel Kit: (2) XL-Poly Load Wheel Assemblies, with (2) Axles and Fasteners |

Caster Assembly - Skid Bar

Caster Assembly - Skid Bar

[back to Contents](#)



| Item | Part No. | Date/Serial Range | Description |
|------|---------------|-------------------|--|
| 1 | HY 2044852 | | Caster Assembly, After-Market Replacement |
| 2 | HY 2046840 | | Caster Wheel Assembly, 95-A, Incl Bearings |
| | HY 2046840-XL | | Caster Wheel Assembly, 97-A, Incl Bearings |
| 3 | HY 2046842 | | Bushing |
| 4 | HY 2046768 | | Axle, Bolt & Nut |
| 5 | HY 2083830 | | Stabilizer |
| 6 | HY 287860 | | Capscrew |
| 7 | HY 292682 | | Lockwasher |



800-331-0839

www.GenericParts.com