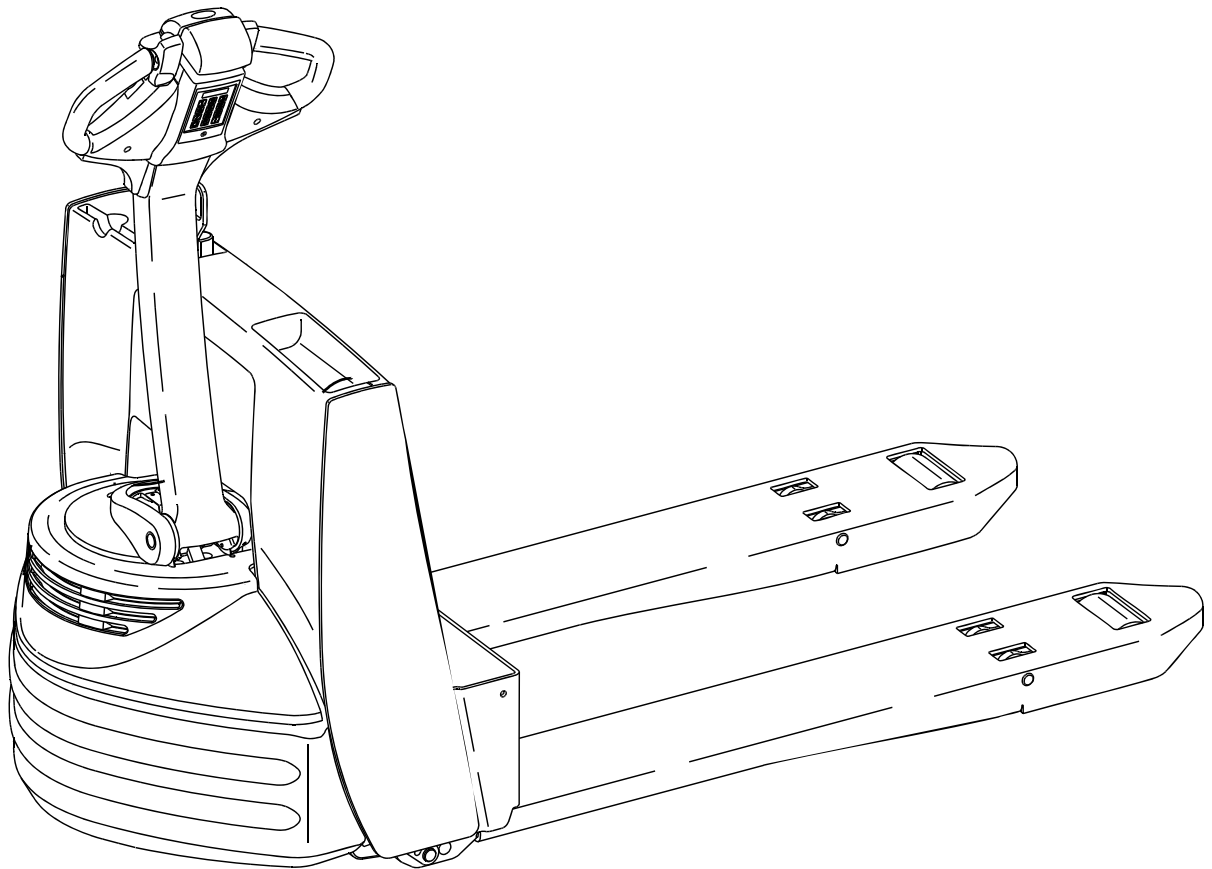


Replacement Parts
for
Raymond 102XM Walkie





Contents

Wheels

Quick Wheel Lookup 4

Electrical

Battery Charger, Battery Connector, Motor Controllers 6

Drive Unit

Drive Motor Parts, Brake Assembly 8

Control Handle

Arm, Throttle Assembly 10

Hydraulic System

12

Frame and Undercarriage

14

Quick Wheel Lookup

Quick Wheel Lookup

[back to Contents](#)

OEM #	Description	Wheel OD in / mm	Tread Width in / mm	Hub Width in / mm	Hub ID in / mm	Bearing ID in / mm	Bearing #	Material/ Color
RA 939-353-047	Load Wheel, Poly 95A	3.25 / 82.5	4.00 / 101.5	4.50 / 114	2.047 / 52	0.984 / 25		Dururun Poly 95A, Scotch
RA 939-353-047-A	Load Wheel Assembly, Poly 95A	3.25 / 82.5	4.00 / 101.5	4.50 / 114	2.047 / 52	0.984 / 25	BS 6205 2RS	Dururun Poly 95A, Scotch
RA 939-353-047-XL	Load Wheel, Poly 97A	3.25 / 82.5	4.00 / 101.5	4.50 / 114	2.047 / 52	0.984 / 25		XL Poly 97A, White
RA 939-353-047-XL-A	Load Wheel Assembly, Poly 97A	3.25 / 82.5	4.00 / 101.5	4.50 / 114	2.047 / 52	0.984 / 25	BS 6205 2RS	XL Poly 97A, White
GWK-102XM-LW	Load Wheel Kit, Includes (2)Load Wheels, Bearings, Axles & Fasteners	3.25 / 82.5	4.00 / 101.5	4.50 / 114	2.047 / 52	0.984 / 25	BS 6205 2RS	Dururun Poly 95A, Scotch
GWK-102XM-LW-XL	Load Wheel Kit, Includes (2)Load Wheels, Bearings, Axles & Fasteners	3.25 / 82.5	4.00 / 101.5	4.50 / 114	2.047 / 52	0.984 / 25	BS 6205 2RS	XL Poly 97A, White
RA 630-235-001	Drive Tire, Rubber Smooth Flat	10.00 / 254	4.00 / 101.5	5.00 / 127	6.50 / 165			Rubber, Black
RA 939-353-084	Drive Tire Assembly, Rubber Smooth Flat, Includes Hub	10.00 / 254	4.00 / 101.5	5.00 / 127	6.50 / 165			Rubber, Black
RA 632-090-001	Drive Tire, Poly Smooth Flat	10.00 / 254	4.00 / 101.5	5.00 / 127	6.50 / 165			Poly 87A, Red
RA 939-353-086	Drive Tire Assembly, Poly Smooth Flat, Includes Hub	10.00 / 254	4.00 / 101.5	5.00 / 127	6.50 / 165			Poly 87A, Red
RA 939-353-075	Hub							
RA 939-353-251	Dururun 95A Poly Caster Wheel Assembly	2.50 / 63.5	2.00 / 51	2.375 / 60	1.37 / 35	0.50 / 12.7	BS 1621 2RS	Dururun Poly 95A, Scotch
RA 939-353-251-XL	XL 97A Poly Casyer Wheel Assembly	2.50 / 63.5	2.00 / 51	2.375 / 60	1.37 / 35	0.50 / 12.7	BS 1621 2RS	XL Poly 97A, White
RA 939-352-259	Caster Assembly							

GWK-102XM-LW

Load Wheel Kit



GWK-102XM-LW-XL

Load Wheel Kit



RA 939-353-047

Poly Load Wheel, 95A



RA 939-353-084

Drive Tire Assembly, Rubber Smooth Flat, Includes Hub



RA 632-090-001

Drive Tire, Poly Smooth Flat



RA 939-353-086

Drive Tire Assembly, Poly Smooth Flat, Includes Hub



RA 939-353-047-A

Poly Load Wheel Assembly, 95A



RA 939-353-047-XL

Poly Load Wheel, 97A



RA 939-353-047-XL-A

Poly Load Wheel Assembly, 97A



RA 939-353-251

Dururun 95A Poly Caster Wheel Assembly



RA 939-353-251-XL

XL 97A Poly Caster Wheel Assembly

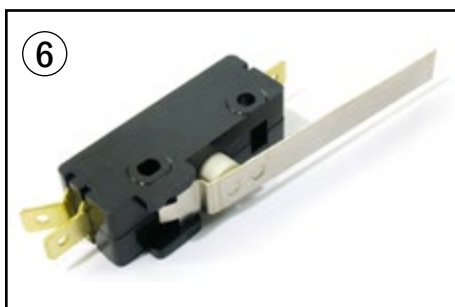


RA 939-352-259

Caster Assembly Complete



Battery Charger, Battery Connector, Motor Controllers

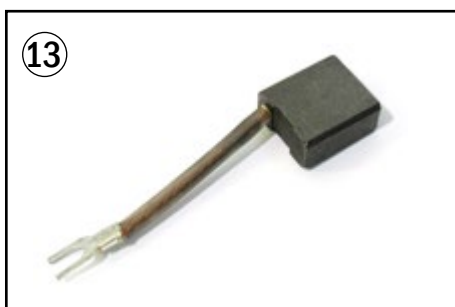
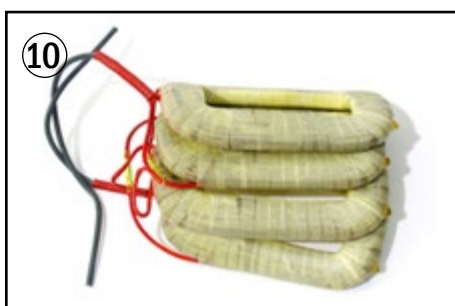


Battery Charger, Battery Connector, Motor Controllers

[back to Contents](#)

Item	Part No.	Description
1	RA 590-701	Battery Connector SB175 Gray
	RA 590-728	Battery Connector SB175 Blue
	RA 590-715	Battery Connector SB175 Red
2	RA 939-353-104	Disconnect Handle, Inc Screws & Nuts
3	RA 939-352-217	Master On/Off Switch
4	RA 851-200-055	Key Switch, Inc. 2 Keys
5	RA 939-353-033	Switch
6	RA 939-353-267	Lift Limit Switch
7	RA 939-353-059	Controller
8	RA 939-353-094	Main Contactor
9	RA 851-201-468	Relay
10	RA 939-352-250	Circuit Breaker
11	RA 939-353-039	Horn
12	RA 939-353-076	Main Harness
13	RA 939-353-134	Head Harness
14	RA 939-353-298	Fuse, 10 Amp
15	RA 939-353-299	Fuse, 80 Amp
16	RA 939-353-286	Battery Carger 24V

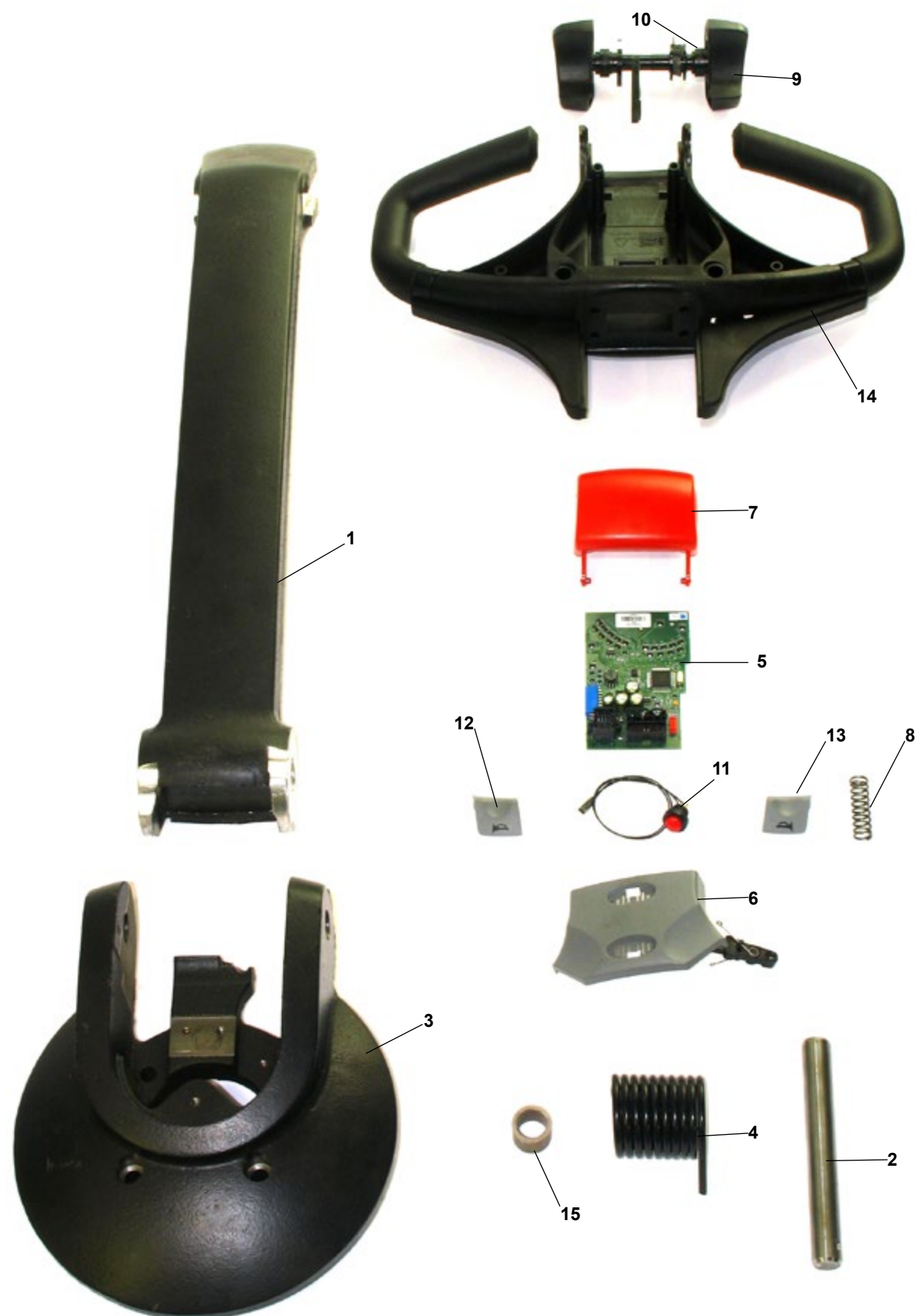
Drive Motor Parts and Brake Assembly



Drive Motor Parts and Brake Assembly

Item	Part No.	Description
1	RA 939-353-062	Drive Unit & Motor Assembly (not shown)
2	RA 939-353-187	Drive Axle
3	RA 939-353-188	Seal
4	RA 939-353-189	Bearing, Drive Axle
5	RA 393-353-229	Spacer
6	RA 939-353-209	Armature (not shown)
7	RA 939-353-208	Seal
8	RA 939-353-207	Shim
9	RA 939-353-206	Bearing
10	RA 939-353-204	Field Coil
11	RA 939-353-221	Bearing
12	RA 939-353-216	Brush Holder
13	RA 939-353-218	Brush
14	RA 939-353-217	Spring
15	RA 939-353-215	Cover
16	RA 939-353-212	Band
17	RA 939-353-190	Brake Assembly (not shown)

Control Handle - Arm, Throttle Assembly

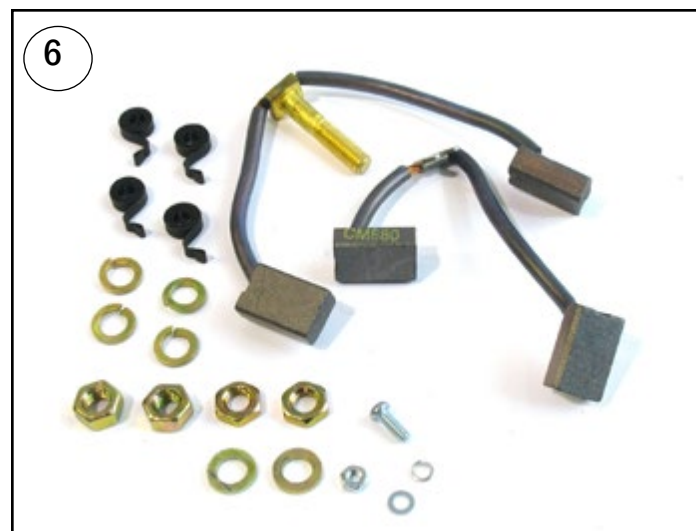


Control Handle - Arm, Throttle Assembly

[back to Contents](#)

Item	Part No.	Date/Serial Range	Description
1	RA 939-353-063		Handle Stem
2	RA 939-353-095		Handle Stem Pin
3	RA 939-352-245		Stem Mount
4	RA 939-353-074		Return Spring
5	RA 851-201-264		Control Card
6	RA 851-201-187		Lift Lower Button
7	RA 851-201-185		Reverse Button
8	RA 851-201-146		Spring
9	RA 939-353-081		Thumb Wheel Assembly
10	RA 851-201-148		Spring
11	RA 851-201-182		Horn Switch
12	RA 851-201-155		Horn Button, Right
13	RA 851-201-156		Horn Button Left
14	RA 939-353-082		Handle
15	RA 939-353-092		Bushing
16	RA 939-353-083		Control Handle Assembly (not shown)

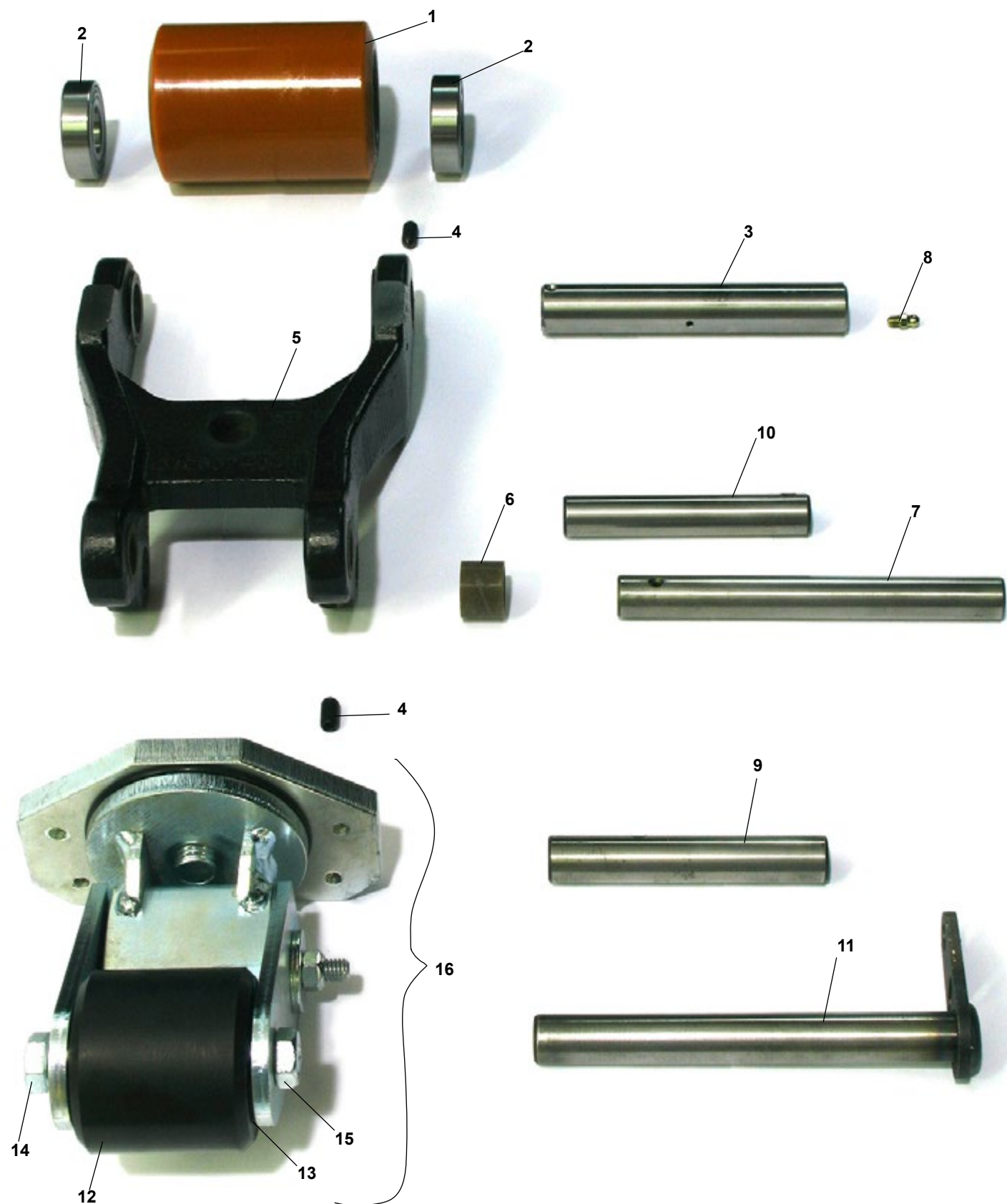
Hydraulic System



Hydraulic System

Item	Part No.	Date/Serial Range	Description
1	RA 939-353-071		Lift Pump & Motor Assembly (not shown)
2	RA 939-353-171		Pump Motor Assembly
3	RA 939-353-183		Brush & Spring Kit
4	RA 939-353-184		Bearing
5	RA 939-353-165		Pump Kit (not shown)
6	RA 939-353-034		Solenoid
7	RA 939-353-014		Release Valve Kit (not shown)
8	RA 939-353-140		Lift Cylinder Assembly
9	RA 939-028		Seal Kit

Frame and Undercarriage



Frame and Undercarriage

Item	Part No.	Description
1	RA 939-353-047	Poly Load wheel, 95A Durometer
	RA 939-353-047-A	Poly Load Wheel Assembly, 95A Durometer, Includes Bearings
	RA 939-353-047-XL	Poly Load Wheel, 97A Durometer
	RA 939-353-047-XL-A	Poly Load Wheel Assembly, 97A Durometer, Includes Bearings
	GWK-102XM-LW	Load Wheel Kit, Includes (2)Load Wheels, Bearings, Axles & Fasteners
	GWK-102XM-LW-XL	Load Wheel Kit, Includes (2)Load Wheels, Bearings, Axles & Fasteners
2	RA 441-127	Bearing
3	RA 939-353-050	Load Wheel Axle
	RA 939-353-127	Load Wheel Axle, Freezer/Corrosion Resistant
4	RA 939-352-258	Set Screw
5	RA 939-352-256	Wheel Fork
6	RA 939-353-060	Bushing
7	RA 939-353-051	Pivot Pin
	RA 939-352-054	Pivot Pin, Freezer/Corrosion Resistant
8	RA 939-353-043	Grease Fitting
9	RA 939-353-053	Pin
	RA 939-353-056	Pin, Freezer/Corrosion Resistant
10	RA 939-353-052	Pin
	RA 939-353-055	Pin, Freezer/Corrosion Resistant
11	RA 939-353-057	Pin, Weldment
	RA 939-353-058	Pin, Weldment, Freezer/Corrosion Resistant
12	RA 939-353-251	Poly Caster Wheel, 95A Durometer, Includes Bearings
	RA 939-353-251-XL	Poly Caster Wheel, 97A Durometer, Includes Bearings
13	RA 939-353-264	Bearing
14	RA 939-353-254	Axle Screw
15	RA 939-353-253	Nut
16	RA 939-352-259	Caster Assembly, Includes Items 12-15



800-331-0839

www.GenericParts.com