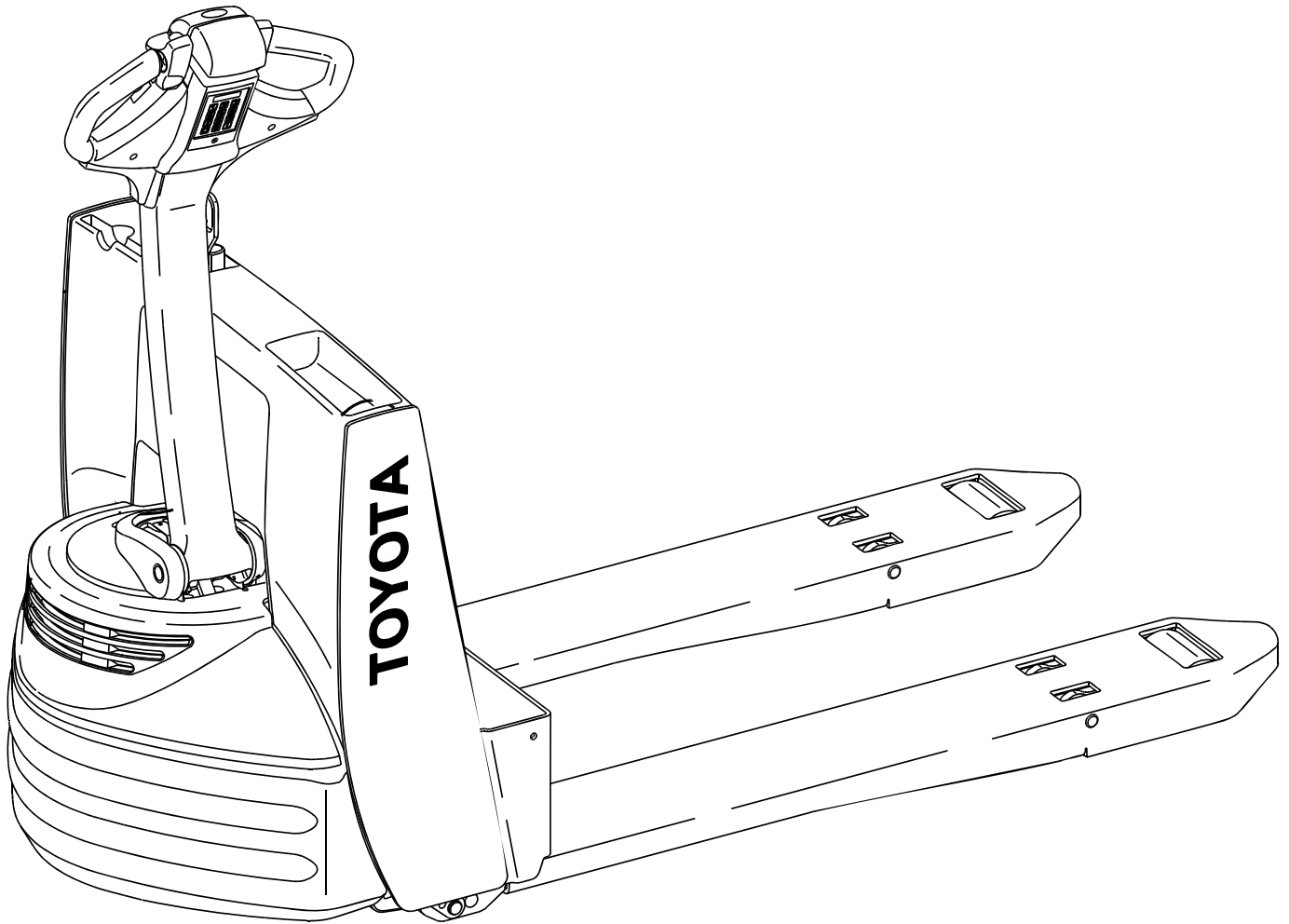


**Replacement Parts**  
**for**  
**Toyota 7HBW23 Walkie**



# Contents

## Wheels

[Quick Wheel Lookup](#) 4

---

## Electrical Systems Components

[Battery Charger, Motor Controllers](#) 6

---

## Drive Unit/Brake

[Drive Motor Parts, Brake Assembly](#) 8

---

## Control Handle

[Arm, Throttle Assembly](#) 10

---

## Hydraulic System

12

---

## Frame and Undercarriage

14

---

## Quick Wheel Lookup

## Quick Wheel Lookup

[back to Content page](#)

OEM #	Description	Wheel OD in/mm	Tread Width in/mm	Wheel OD in/mm	Tread Width in/mm	Bearing ID in/mm	Bearing #	Material/Color
TO 00590-47623-71	Load Wheel, Poly 95A	3.25 / 82.5	4.00 / 101.5	4.50 / 114	2.047 / 52	0.984 / 25		Duraron Poly 95A , Scotch
TO 00590-47623-71-A	Load Wheel Assembly, Poly 95A	3.25 / 82.5	4.00 / 101.5	4.50 / 114	2.047 / 52	0.984 / 25	BS 6205 2RS	Duraron Poly 95A , Scotch
TO 00590-47625-71	Load Wheel, Poly 97A	3.25 / 82.5	4.00 / 101.5	4.50 / 114	2.047 / 52	0.984 / 25		XL Poly 97A , White
TO 00590-47625-71-A	Load Wheel Assembly, Poly 97A	3.25 / 82.5	4.00 / 101.5	4.50 / 114	2.047 / 52	0.984 / 25	BS 6205 2RS	XL Poly 97A , White
<a href="#">GWK-7HBW23-LW</a>	Load Wheel Kit, Includes (2)Load Wheels, Bearings, Axles & Fasteners	3.25 / 82.5	4.00 / 101.5	4.50 / 114	2.047 / 52	0.984 / 25	BS 6205 2RS	Duraron Poly 95A , Scotch
<a href="#">GWK-7HBW23-LW-XL</a>	Load Wheel Kit, Includes (2)Load Wheels, Bearings, Axles & Fasteners	3.25 / 82.5	4.00 / 101.5	4.50 / 114	2.047 / 52	0.984 / 25	BS 6205 2RS	XL Poly 97A , White
TO 00590-46883-71	Drive Tire, Rubber Smooth Flat	10.00 / 254	4.00 / 101.5	5.00 / 127	6.50 / 165			Rubber , Black
TO 00590-43409-71	Drive Tire Assembly, Rubber Smooth Flat, Includes Hub	10.00 / 254	4.00 / 101.5	5.00 / 127	6.50 / 165			Rubber , Black
TO 00590-46881-71	Drive Tire, Poly Smooth Flat	10.00 / 254	4.00 / 101.5	5.00 / 127	6.50 / 165			Poly 87A, Red
TO 00590-46884-71	Drive Tire Assembly, Poly Smooth Flat, Includes Hub	10.00 / 254	4.00 / 101.5	5.00 / 127	6.50 / 165			Poly 87A, Red
TO 000590-43421-71	Hub							
TO 00590-43318-71	Duraron 95A Poly Caster Wheel Assembly	2.50 / 63.5	2.00 / 51	2.375 / 60	1.37 / 35	0.50 / 12.7	BS 1621 2RS	Duraron Poly 95A , Scotch
TO 00590-43318-71-XL	XL 97A Poly Caster Wheel Assembly	2.50 / 63.5	2.00 / 51	2.375 / 60	1.37 / 35	0.50 / 12.7	BS 1621 2RS	XL Poly 97A , White
TO 00590-43303-71	Caster Assembly Complete							

**TO 00590-47623-71**  
Load wheel , Poly, 95A



**TO 00590-43318-71**  
Caster wheel assembly



**TO 00590-43318-71-XL**  
Caster wheel assembly, 97A



**GWK-7HBW23-LW**  
Load Wheel Kit, Poly, 95A



**GWK-7HBW23-LW-XL**  
Load Wheel Kit, Poly, 97A



**TO 00590-43303-71**  
Caster Assembly



**TO 00590-47623-71-A**  
Load Wheel assembly Poly 95A includes bearings, washers



**TO 00590-46883-71**  
Drive tire, smooth flat rubber



**TO 00590-46881-71**  
Drive tire, Poly 95A



**TO 00590-46883-71**  
Drive Tire, Poly Smooth Flat



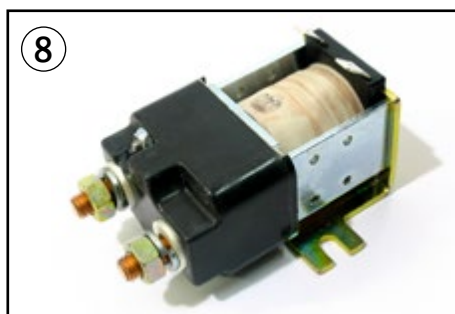
**TO 00590-46884-71**  
Drive Tire Assembly



**TO 000590-43421-71**  
Hub



## Electrical Systems Components

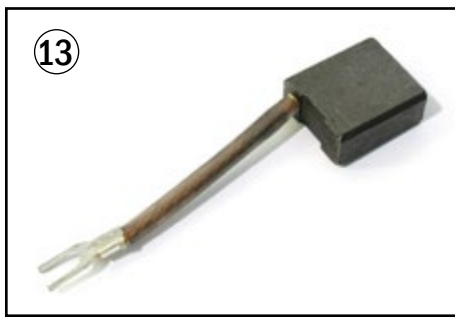
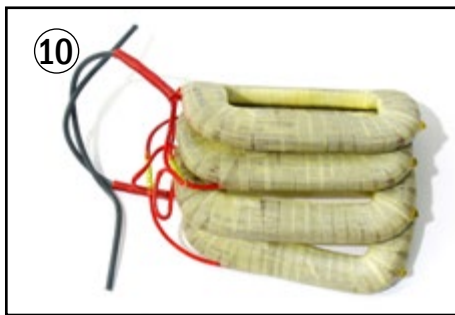


## Electrical Systems Components

[back to Content page](#)

Item	Part No.	Description
1	TO 00590-40800-71	Battery Connector SB175 Gray
	TO 00590-05125-71	Battery Connector SB350 Gray
	TO 00590-40975-71	Battery Connector SB175 Yellow
	TO 00590-47621-71	Battery Connector SB350 Yellow
	TO 00590-40416-71	Battery Connector SB175 Red
	TO 00590-05126-71	Battery Connector SB350 Red
	TO 00590-40951-71	Battery Connector SB175 Blue
	TO 00590-47622-71	Battery Connector SB350 Blue
2	AN 256	Disconnect Handle, Inc Screws & Nuts
3	TO 00590-40983-71	Rocker On/Off Switch
4	TO 00590-40978-71	Key Switch, Inc. 2 Keys (Not SHown)
5	TO 00590-43472-71	Switch
6	TO 00590-43475-71	Lift Limit Switch
7	TO 00590-47055-71	Controller
8	TO 00590-43450-71	Main Contactor
9	TO 00590-40042-71	Relay
10	TO 00590-43457-71	Circuit Breaker
11	TO 00590-41941-71	Horn
12	TO 00590-47605-71	Main Harness
13	TO 00590-43482-71	Head Harness
14	TO 00590-43555-71	Fuse, 10 Amp
15	TO 00590-43559-71	Fuse, 80 Amp
16	TO 00590-43337-71	Battery Charger, 24 Volt

## Drive Unit - Drive Motor Parts, & Brake

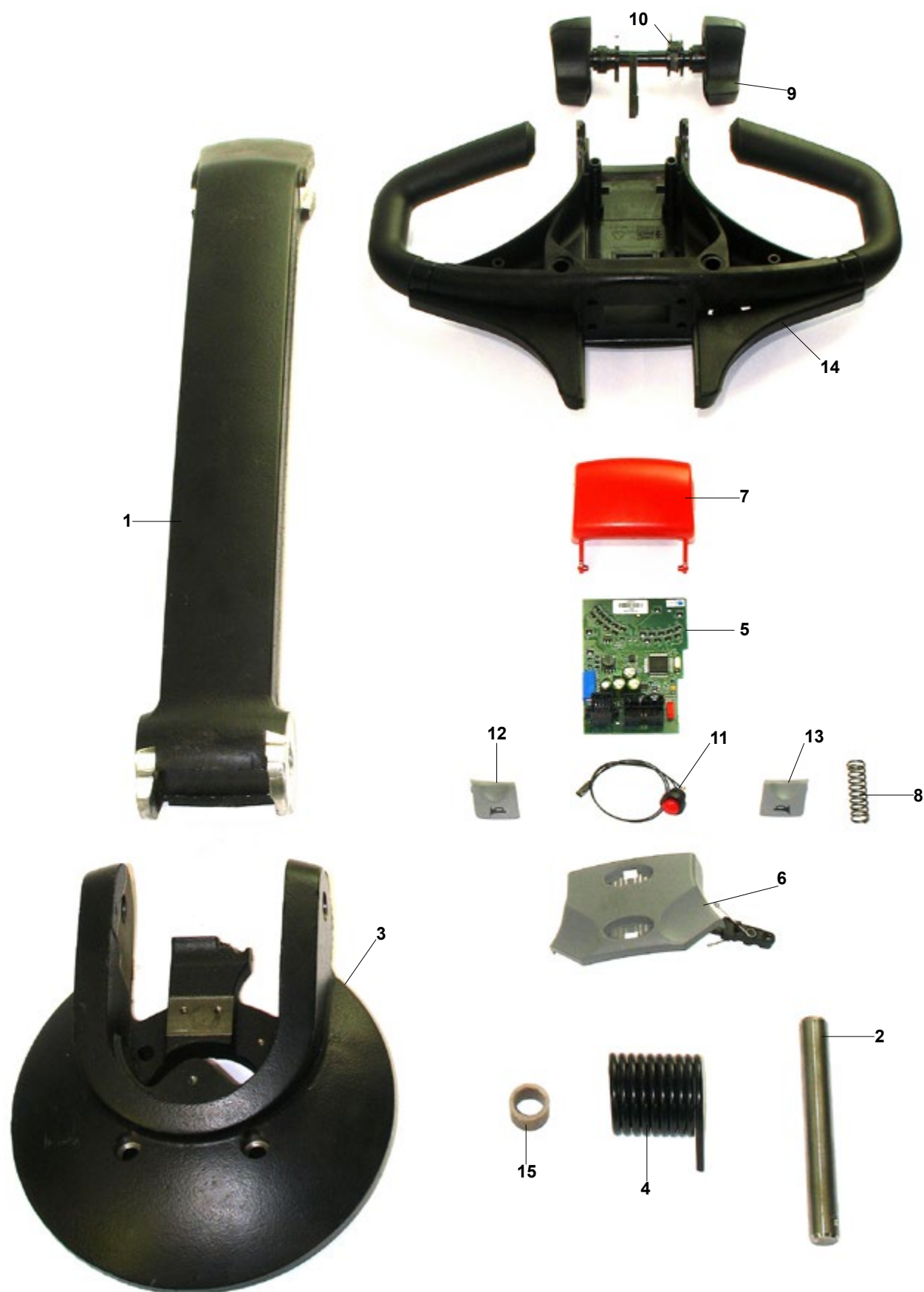


## Drive Unit - Drive Motor Parts, & Brake

[back to Content page](#)

Item	Part No.	Description
1	TO 00590-43295-71	Drive Unit & Motor Assembly (not shown)
2	TO 00590-43396-71	Drive Axle
3	TO 00590-43428-71	Seal
4	TO 00590-43429-71	Bearing, Drive Axle
5	TO 00590-43430-71	Spacer
6	TO 00590-43373-71	Armature (not shown)
7	TO 00590-43375-71	Seal
8	TO 00590-43404-71	Shim
9	TO 00590-43403-71	Bearing
10	TO 00590-43401-71	Field Coil
11	TO 00590-43364-71	Bearing
12	TO 00590-43370-71	Brush Holder
13	TO 00590-43372-71	Brush
14	TO 00590-43371-71	Spring
15	TO 00590-43369-71	Cover
16	TO 00590-43367-71	Band
17	TO 00590-43446-71	Brake Assembly (not shown)

# Control Handle - Arm, Throttle Assembly

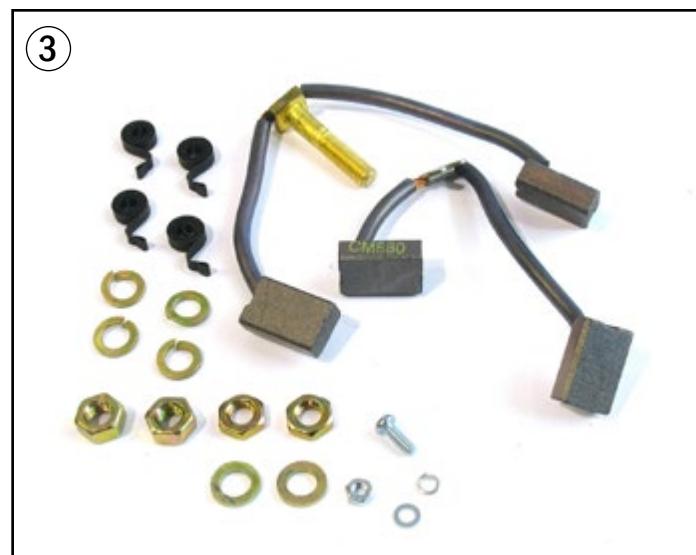


# Control Handle - Arm, Throttle Assembly

[back to Content page](#)

Item	Part No.	Description
1	TO 00590-47607-71	Tiller
2	TO 00590-43296-71	Pin, Tiller
3	TO 00590-43284-71	Mount, Stem
4	TO 00590-43290-71	Return Spring
5	TO 00590-47051-71	Control Card
6	TO 00590-42462-71	Lift Lower Button
7	TO 00590-47054-71	Reverse Button
8	TO 00590-42420-71	Spring
9	TO 00590-43360-71	Thumb Wheel Assembly
10	TO 00590-42422-71	Spring
11	TO 00590-42456-71	Horn Switch
12	TO 00590-42429-71	Horn Button, Right
13	TO 00590-42430-71	Horn Button Left
14	TO 00590-43298-71	Handle
15	TO 00590-43300-71	Bushing
16	TO 00590-46381-71	Control Handle Assembly (Not Shown)

## Hydraulic System

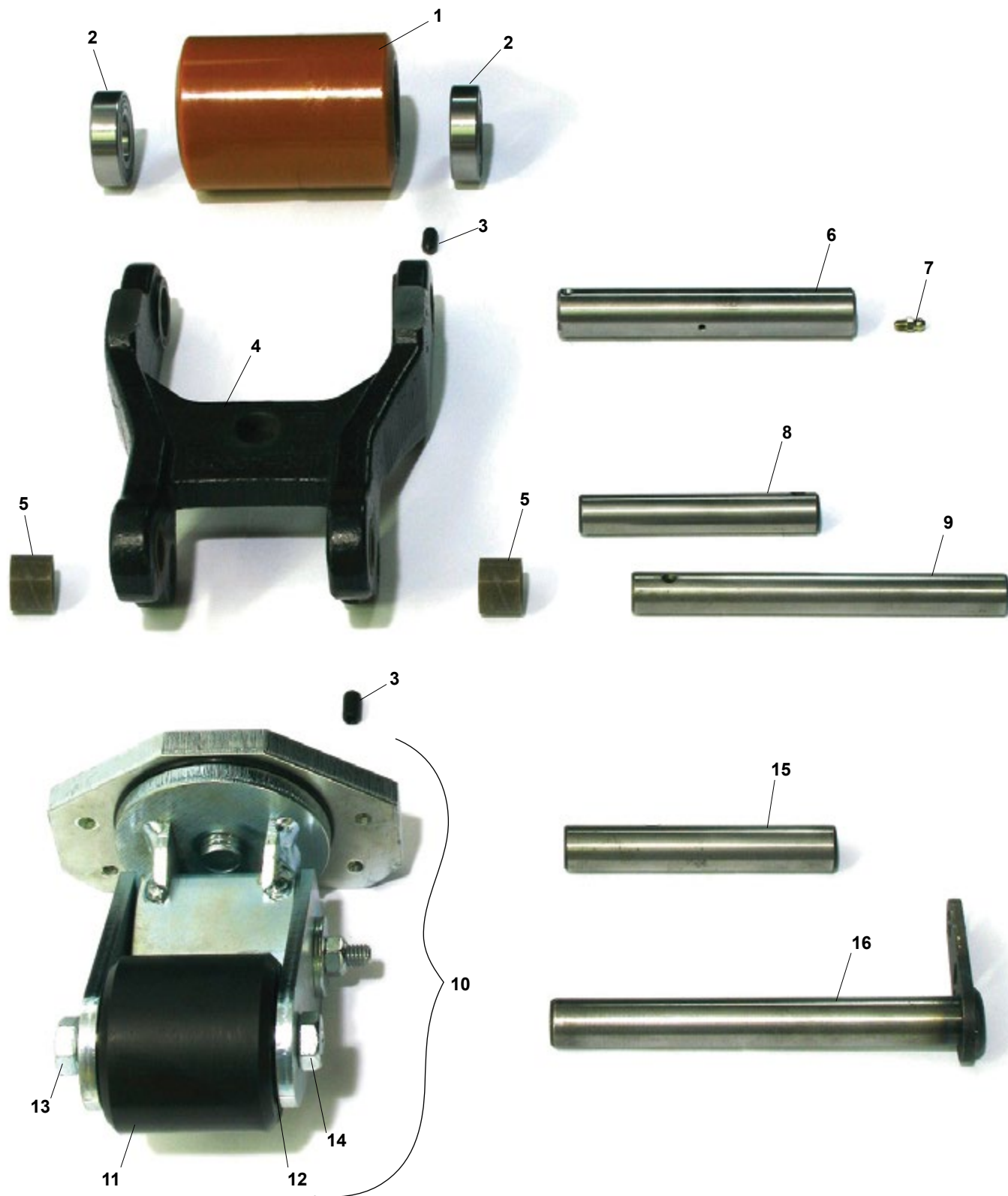


## Hydraulic System

[back to Content page](#)

Item	Part No.	Description
1	TO 00590-43461-71	Lift Pump & Motor Assembly
2	TO 00590-43392-71	Pump Motor Assembly
3	TO 00590-43393-71	Brush & Spring Kit
4	TO 00590-43405-71	Bearing
5	TO 00590-43508-71	Pump Kit
6	TO 00590-43462-71	Solenoid
7	TO 00590-43510-71	Release Valve Assembly
8	TO 00590-43503-71	Lift Cylinder Assembly
9	TO 00590-40809-71	Seal Kit, Lift Cylinder

## Frame and Undercarriage



[back to Content page](#)

## Frame and Undercarriage

Item	Part No.	Description	
1	GWK-7HBW23-LW	Load Wheel Kit, Poly 95A	Includes Items 1, 2, 3, 6 and 7
	GWK-7HBW23-LW-XL	Load Wheel Kit, Poly 97A	Includes Items 1, 2, 3, 6 and 7
	TO 00590-47623-71	Poly Load wheel, Poly 95A	
	TO 00590-47623-71-A	Poly Load Wheel Assembly, Poly 95A	Includes Bearings
	TO 00590-47625-71	Poly Load Wheel, Poly 97A	
	TO 00590-47625-71-A	Poly Load Wheel Assembly, Poly 97A	Includes Bearings
2	TO 00590-43299-71	Bearing	
3	TO 00590-43271-71	Set Screw	
4	TO 00590-43543-71	Wheel Fork	
5	TO 00590-43276-21	Bushing	
6	TO 00590-43547-71	Load Wheel Axle	
	TO 00590-43548-71	Load Wheel Axle	Freezer/Corrosion Resistant (Greaseable)
7	TO 00590-00019-71	Grease Fitting	
8	TO 00590-43274-71	Pin	
	TO 00590-43275-71	Pin	Freezer/Corrosion Resistant
9	TO 00590-43326-71	Pivot Pin	
	TO 00590-43325-71	Pivot Pin	Freezer/Corrosion Resistant
10	TO 00590-43303-71	Caster Assembly	Includes Items 11-14
11	TO 00590-43318-71	Poly Caster Wheel Assembly, 95A	Durometer, Includes Bearings
	TO 00590-43318-71-XL	Poly Caster Wheel Assembly, 97A	Durometer, Includes Bearings
12	TO 00590-43317-71	Bearing	
13	TO 00590-43319-71	Axle Screw	
14	TO 00590-43315-71	Nut	
15	TO 00590-43358-71	Pin	
	TO 00590-43357-71	Pin	Freezer/Corrosion Resistant
16	TO 00590-43332-71	Pin	
	TO 00590-43342-71	Pin	Freezer/Corrosion Resistant





**800-331-0839**

[www.GenericParts.com](http://www.GenericParts.com)