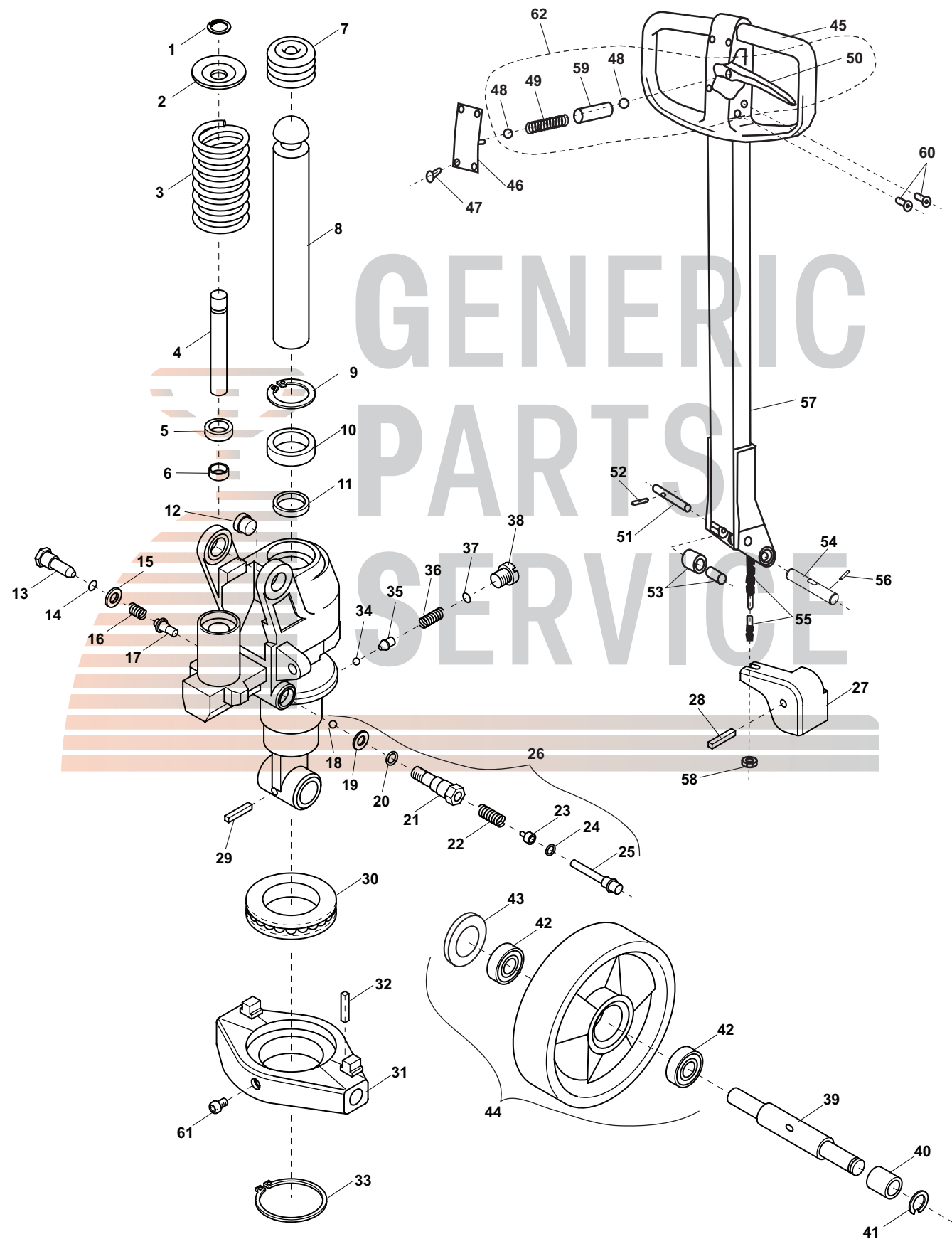


# BT LHM-230 Hydraulic Unit



# BT LHM-230 Hydraulic Unit

Item	Part No.	Description
1	20043	Snap Ring
2	215282	Washer
3	215156	Spring
4	215286	Piston
5	A 21060	Scraper
6	A 215866	U-Cup
7	215803	Sleeve
8	215030	Piston
9	A 20642	Lock Ring
10	A 20066	Scraper
11	A 215867	U-Cup
12	215913	Bushing
13	221586	Valve Plug
14	A 24213	O-Ring
15	A 219201	Washer
16	A 39106	Spring
17	A 223935	Valve Cone
18	A 20065	Ball
19	A 215288	Washer
20	A 22032	O-Ring
21	223977	Valve Body
22	A 47071	Spring
23	A 49513	Guide
24	A 22318	Scraper
25	A 47051	Release Pin
26	215776	Lowering Valve, Complete (Includes 18 - 25)
27	215128	Lowering Arm
28	A 220312	Roll Pin
29	20001	Roll Pin
30	228275	Thrust Bearing
31	215092	Traverse
32	20001	Roll Pin
33	228129	Lock Ring
34	22055	Ball
35	221231	Guide Pin
36	221227	Spring
37	A 22032	O-Ring
38	223922	Screw
39	220310	Steer Wheel Axle
40	161637	Spacer
41	20019	Lock Ring
42	210062	Bearing
43	156623	Dust Cover

Item	Part No.	Description
44	160422-HD	Steer Wheel Assembly, Red Ultra-Poly On Aluminum Hub W/ Bearings
	160422-ST	Steer Wheel Assembly, Black Poly On Nylon Hub W/ Bearings
	160421	Steer Wheel Assembly, Black Nylon W/ Bearings
	160433	Steer Wheel Assembly, Steel W/ Bearings
	GWK-LHM-CK	Complete Wheel Kit, (2) Ultra-Poly Load Roller Assemblies (70D), (2) Poly Steer Wheel Assemblies, W/ Bearings, Axles & Fasteners
45	173752	Handle Loop
46	173753	Cover
47	177154	Screw
48	20065	Ball
49	218182	Spring
50	173754	Handle Lever
51	47930	Axle
52	20461	Roller Pin
53	202755	Roller / Bushing
54	227911	Axle
55	215775	Control Rod and Chain Assembly
56	20041	Roll Pin
57	215131	Complete Handle Assembly
58	21094	Adjusting Nut
59	54140	Sleeve
60	173764	Plastic Plug
61	27662	Grease Fitting
62	210717	Control Lever Assembly
KITS	A 243772	Seal Kit, Complete
	HU BT LHM230	Rebuilt Hydraulic Unit - Exchange

### Complete Wheel Kit

