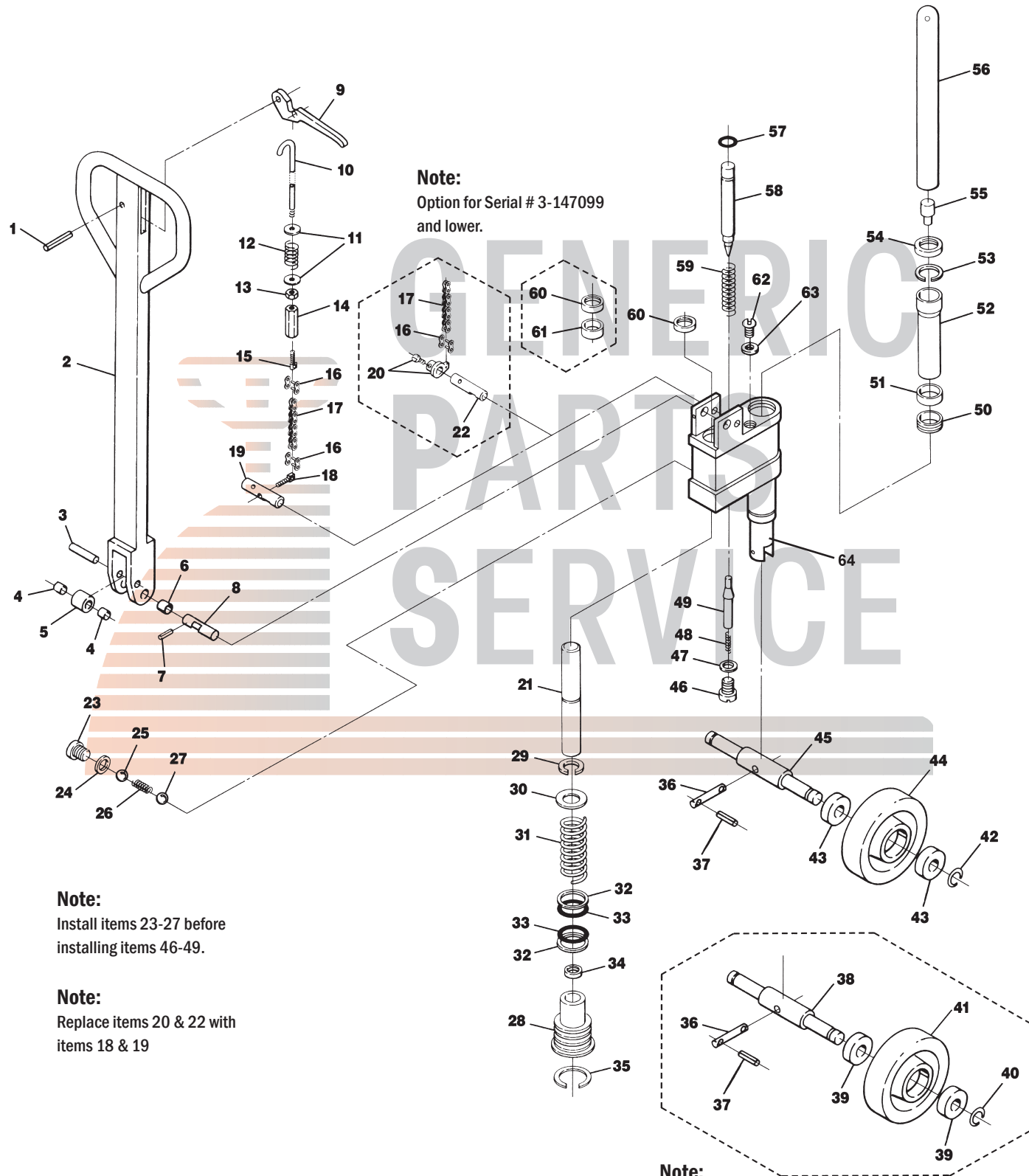


Crown Older PTH Hydraulic Unit

Serial #3-118400 to #3-183849



Note:
Option for Serial # 3-147099 and lower.

Note:
Install items 23-27 before installing items 46-49.

Note:
Replace items 20 & 22 with items 18 & 19

Note:
Option for Serial # 3-147099 and lower
25mm bearing ID, Item # 41 (Old Style)

Crown Older PTH Hydraulic Unit

Serial #3-118400 to #3-183849

Item	Part No.	Description
1	50000-012	Roll Pin
2	41182	Handle Assembly, (Includes Items 1-6 and 9-14)
3	41191	Roller Axle
4	55017-002	Roller Bearing
5	41192	Roller
6	41194	Bushing
7	50000-015	Roll Pin
8	41252	Handle Axle
9	79873	Control Lever
10	41189	Control Rod
11	41193	Washer
12	79918	Spring
13	50008-008	Nut
14	41190	Adjusting Nut
15	41180	Chain Connector
16	79905	Master Link
17	79904	Chain
18	41272	Chain Connector
19	41271	Pin
20	-	Replace W/ Items 18 & 19
21	A 41996	Piston
	41999	Piston and Cylinder Assembly (Includes Items 25,29,30,31,32)
22	41176	Pin
23	A 41171	Screw Plug
24	A B 50011-018	Washer
25	A B 65002-005	Ball
26	A B 79914	Spring
27	A B 65002-007	Ball
28	41995	Pump Cylinder
29	A 50012-021	Snap Ring
30	41170	Washer
31	79908	Spring
32	A B 64074-005	Back-Up Ring
33	A B 54002-012	O-Ring
34	A B 54015-004	U-Cup
35	A 50012-026	Snap Ring
36	41195	Pin
37	50000-001	Roll Pin
38	41197	Steer Wheel Axle
39	65081-021	Bearing
40	50012-022	Snap Ring
41	82274-1-HD	Steer Wheel Assembly, Red Ultra-Poly On Aluminum Hub W/ Bearings
	82274-1-ST	Steer Wheel Assembly, Black Poly On Nylon Hub W/ Bearings
	82274-2	Steer Wheel Assembly, Nylon W/ Bearings
	82274-3	Steer Wheel Assembly, Steel W/ Bearings
42	50012-021	Snap Ring
43	65081-020	Bearing
44	41275-1-HD	Steer Wheel Assembly, Red Ultra-Poly On Aluminum Hub W/ Bearings
	41275-1-ST	Steer Wheel Assly, Black Poly On Nylon Hub W/ Bearings
	41275-2	Steer Wheel Assembly, Nylon W/ Bearings
	41275-3	Steer Wheel Assembly, Steel W/ Bearings
	GWK-PTH-CK	Complete Wheel Kit, (2) Ultra-Poly Load Roller Assemblies (70D), (2) Poly Steer Wheel Assemblies, W/ Bearings, Axles & Fasteners
45	41270	Steer Wheel Axle
46	A 41172	Screw Plug
47	A B 50011-015	Washer
48	A B 79913	Spring
49	A B 41174	Valve
50	A B 41166	Bushing
51	A B 54015-001	U-Cup
52	41165	Bushing
53	A 50012-025	Snap Ring
54	A B 54001-008	Scraper
55	41254	Magnet and Sleeve Assembly
56	41163	Ram Assembly (Includes Item 55)
57	A B 54002-011	O-Ring
58	41175	Release Pin
59	A B 79915	Spring
60	A B 54001-002	Scraper
61	41162	Bushing
62	A 41181	Filler Plug
63	A B 50011-011	Washer
64	HU CR PTH-2PC	Rebuilt Hydraulic Unit - Exchange (Serial # 3-118400 to #3-183849)
KITS	A 41246-SUPER	Super Seal Kit
KITS	B 41246	Seal Kit