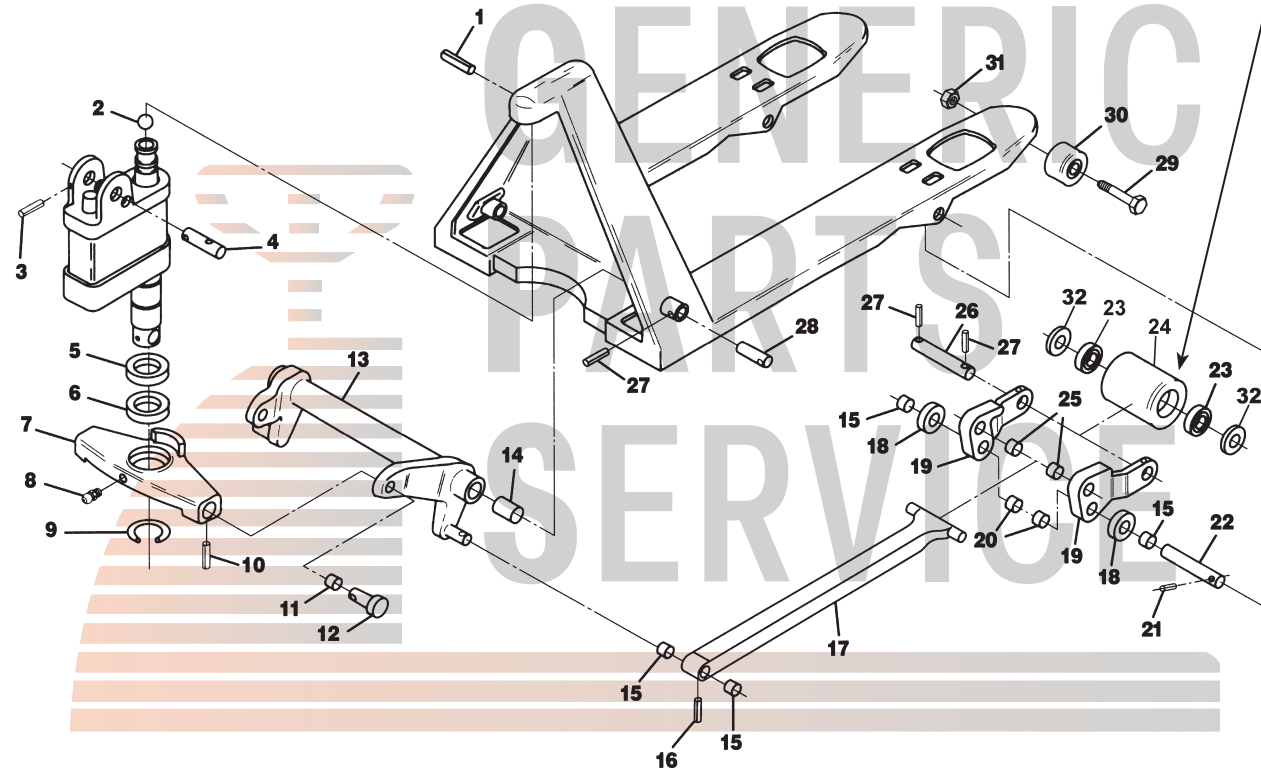


# Crown PTH50 Frame

Serial #7-000000 to Serial #7-512501

### Upgraded Load Rollers Available!

Ultra-Poly is a poly that is very hard, but won't shatter like nylon. Ultra-Poly is easier to roll than regular poly and is non-marking!



## Key differences:

### Push rods -

PTH has ears, PTH50 has no ears.

### Lifting link -

PTH pins (item 20 on page 54) are removable, PTH50 pins are welded.

### Load rollers -

PTH - 3-1/4" diameter, PTH50 - 3" diameter.

### Traverse -

PTH has long ears, PTH50 has a lip and short, heavy-duty ears.

## Crown Roll Pin Kit

Contains enough roll pins to repair one Crown PTH50

# Crown PTH50 Frame

Serial #7-000000 to Serial #7-512501

Item	Part No.	Description
1	50000-014	Roll Pin
2	55001-010	Ball
3	50000-015	Roll Pin
4	44519	Handle Axle
5	44468	Washer
6	55018-001	Traverse Bearing
7	44466	Traverse
8	54011-001	Lube Fitting
9	50012-024	Snap Ring
10	50000-010	Roll Pin
11	41201	Bushing
12	44467	Pin
13	44472	Lifting Link, 20" Wide Jack
	44473	Lifting Link, 27" Wide Jack
14	55084-002	Bushing
15	42053-011	Bushing
16	50000-016	Roll Pin
17	44488-002	Push Rod, 36" Forks
	44488-004	Push Rod, 42" Forks
	44488-006	Push Rod, 48" Forks (Includes Item 15)
18	44777	Exit Roller
19	44501	Load Roller Bracket (Pair) (Includes Items 20 & 25)

Item	Part No.	Description
20	42053-012	Bushing
21	50000-011	Roll Pin
22	44464	Pivot Axle
23	65081-020	Bearing
24	44506-001-D	Load Roller Assembly, Red Ultra-Poly On Aluminum Hub W/ Bearings
	44506-001	Load Roller Assembly, Black Ultra-Poly On Steel Hub W/ Bearings
	44506-002	Load Roller Assembly, Nylon W/ Bearings
	44506-003	Load Roller Assembly, Steel W/ Bearings
	GWK-PTH50-LW	Load Wheel Kit, (2) Black Ultra-Poly (70D), Load Roller Assemblies, W/ Bearings, Axles & Fasteners
25	41139	Bushing
26	44509	Load Roller Axle
27	50000-017	Roll Pin
28	44463	Lifting Link Pin
29	50007-023	Bolt
30	44461	Entry Roller
31	50008-025	Nut
32	44516	Washer
KITS	RPK50	Roll Pin Kit

### Load Wheel Kit

