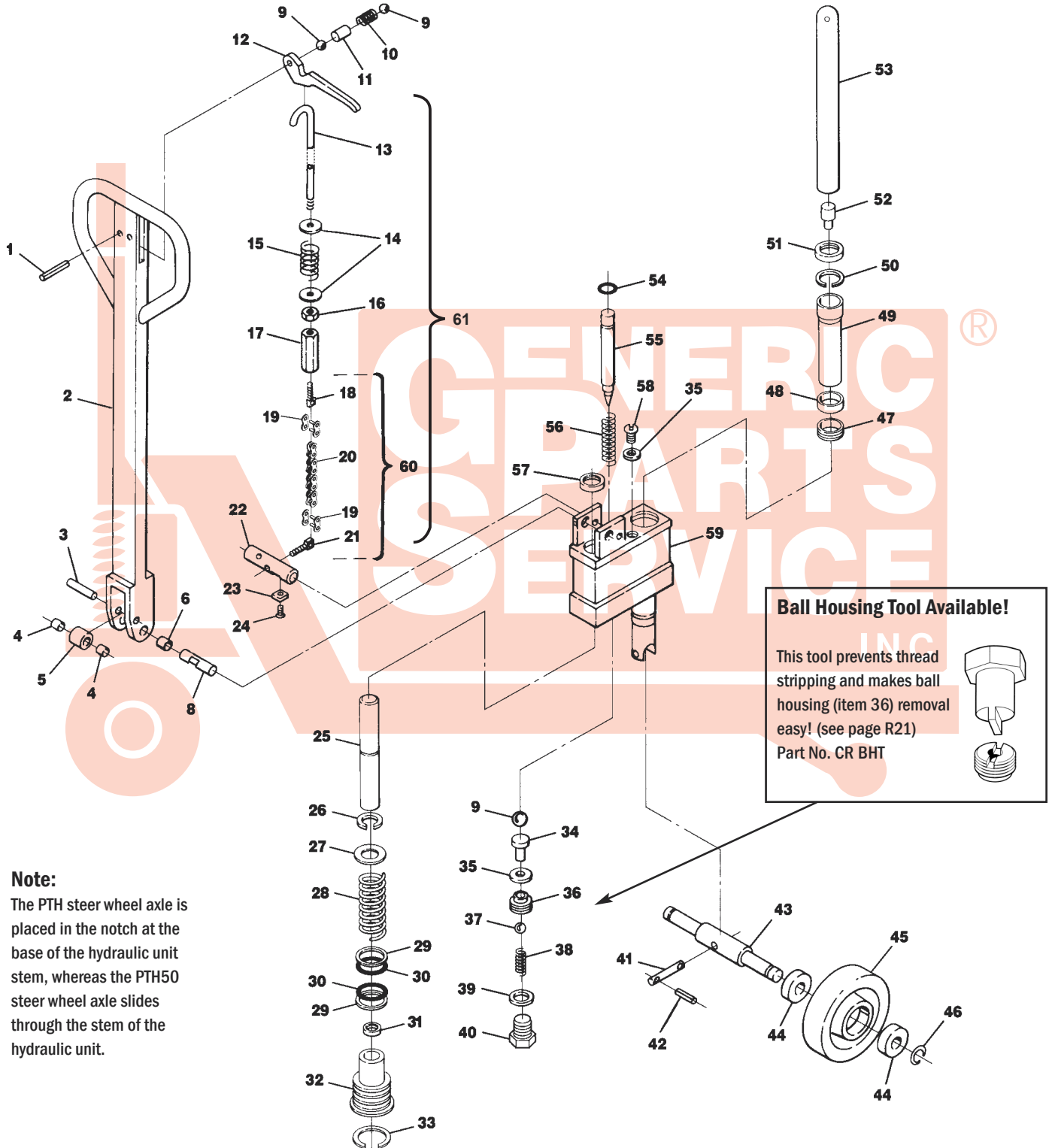


# Crown Later PTH Hydraulic Unit

Serial #3-183850 and higher



**Note:**

The PTH steer wheel axle is placed in the notch at the base of the hydraulic unit stem, whereas the PTH50 steer wheel axle slides through the stem of the hydraulic unit.

# Crown Later PTH Hydraulic Unit

Serial #3-183850 and higher

Item	Part No.	Description	List Price
1	50000-012	Roll Pin	\$0.50
2	41293	Handle Assembly, (Incl. Items 1-6 and 9-17)	\$99.00
3	41191	Roller Axle	\$5.00
4	55017-002	Roller Bearing	\$10.00
5	41192	Roller	\$8.00
6	41194	Bushing	\$3.00
8	41252	Handle Axle	\$12.00
9	A B 55001-007	Ball	\$2.00
10	41292	Spring	\$1.50
11	41326	Sleeve	\$5.00
12	41325	Control Lever	\$15.00
13	41295	Control Rod	\$10.00
14	41193	Washer	\$0.50
15	79918	Spring	\$1.00
16	50008-008	Nut	\$0.50
17	41190	Adjusting Nut	\$5.00
18	41180	Chain Connector	\$3.00
19	79905	Master Link	\$2.50
20	79904	Chain	\$3.00
21	41272	Chain Connector	\$5.00
22	41302	Pin	\$6.00
23	A 41303	Actuating Plate	\$5.00
24	A 50003-012	Screw	\$0.50
25	A 41996	Piston	\$20.00
	41999	Piston and Cylinder Assy (Includes Items 25,29,30,31,32)	\$90.00
26	A 50012-021	Snap Ring	\$0.50
27	41170	Washer	\$3.00
28	79908	Spring	\$8.00
29	A B 64074-005	Back-Up Ring	\$1.00
30	A B 54002-012	O-Ring	\$4.00
31	A B 54015-004	U-Cup	\$5.00
32	41995	Pump Cylinder	\$49.00
33	A 50012-026	Snap Ring	\$2.00
34	A B 41286	Tappet	\$6.00
35	A B 50011-010	Washer	\$1.00
36	A B 41289	Ball Housing	\$5.00
37	A B 55001-002	Ball	\$2.00
38	A B 41288	Spring	\$2.00
39	A B 50011-020	Washer	\$1.00
40	A 41301	Screw Plug	\$4.00
41	41195	Pin	\$7.00
42	50000-001	Roll Pin	\$0.50
43	41270	Steer Wheel Axle	\$14.00

Item	Part No.	Description	List Price
44	65081-020	Bearing	\$5.00
45	41275-1-HD	Steer Wheel Assembly, Red Ultra Poly On Aluminum Hub W/ Bearings, 20 mm Bearing ID	\$55.00
	41275-1-ST	Steer Wheel Assy, Black Poly On Nylon Hub W/ Bearings, 20 mm Bearing ID	\$38.00
	41275-2	Steer Wheel Assembly, Nylon W/ Bearings, 20 mm Bearing ID	\$36.00
	41275-3	Steer Wheel Assembly, Steel W/ Bearings, 20 mm Bearing ID	\$59.00
	GWK-PTH-CK	Complete Wheel Kit, (2) Load Roller Assy, (2) Steer Wheel Assy W/ Bearings, Axles and Fasteners	\$124.95
46	50012-021	Snap Ring	\$0.50
47	A B 41166	Bushing	\$4.00
48	A B 54015-001	U-Cup	\$7.00
49	41165	Bushing	\$20.00
50	A 50012-025	Snap Ring	\$1.00
51	A B 54001-008	Scraper	\$5.00
52	41254	Magnet and Sleeve Assembly	\$12.00
53	41163	Ram Assembly (Incl Item 52)	\$49.00
54	A B 54002-011	O-Ring	\$2.00
55	41284	Release Pin	\$12.00
56	A B 79915	Spring	\$1.00
57	A B 54001-002	Scraper	\$3.00
58	A 41181	Filler Plug	\$2.00
59	HU CR PTH-1PC	Rebuilt Hydraulic Unit - Exchange	*\$139.00
60	79904-A	Chain Assembly (Incl Item 18 - 21)	\$12.00
61	41295-A	Pull Rod Chain Assy (Includes Items 13-21)	\$25.00
KITS A	43023-SUPER	Super Seal Kit	\$49.00
KITS B	43023	Seal Kit	\$29.00

Complete  
Wheel Kit



GWK-PTH-CK

\*Non-discounting item

Prices subject to change without notice. All manufacturers' names, part numbers and descriptions are used for reference purposes only. We do not imply that any parts are the products of a particular manufacturer. Copyright © 2008 by GPS, Inc. All rights reserved.