

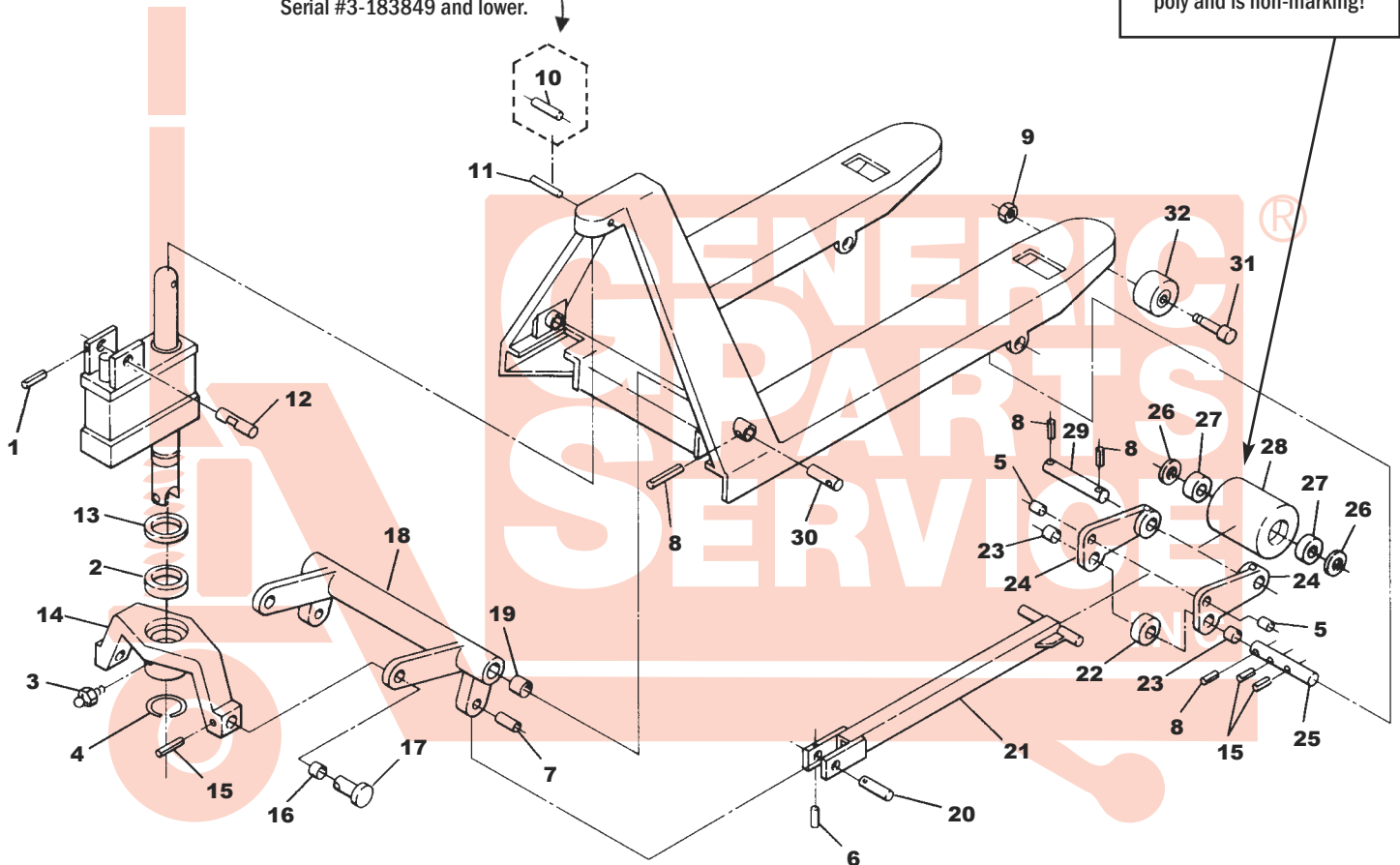
# Crown PTH Frame

Serial #3-118400 and higher

## Upgraded Load Rollers!

Ultra-poly is a poly that is very hard, but won't shatter like nylon. Ultra-poly is easier to roll than regular poly and is non-marking!

**Older Style:**  
Serial #3-183849 and lower.



## Key differences:

### Push rods -

PTH has ears, PTH50 has no ears.

### Lifting link -

PTH pins (item 20) are removable, PTH50 pins are welded.

### Load rollers -

PTH - 3-1/4" diameter, PTH50 - 3" diameter.

### Traverse -

PTH has long ears, PTH50 has a lip and short, heavy-duty ears.

# Crown PTH Frame

Serial #3-118400 and higher

Item	Part No.	Description	List Price
1	50000-015	Roll Pin	\$0.50
2	55018-001	Traverse Bearing	\$12.00
3	54011-001	Lube Fitting	\$1.00
4	50012-024	Snap Ring	\$1.00
5	41201	Bushing	\$2.00
6	50000-016	Roll Pin	\$0.50
7	41139	Bushing	\$2.00
8	50000-017	Roll Pin	\$0.50
9	50008-025	Nut	\$0.50
10	50000-034	Roll Pin	\$1.00
11	50000-036	Roll Pin	\$0.75
12	41252	Handle Axle	\$12.00
13	79850	Washer	\$10.00
14	41249	Traverse	Special Order
15	50000-012	Roll Pin	\$0.50
16	41138	Bushing	\$2.00
17	41149	Shoulder Pin	\$7.00
18	41129-002	Lifting Link, 27" Wide Jack	Special Order
19	41137	Bushing	\$2.00
20	41148	Pin	\$5.00
21	41141-002	Push Rod, 36" Forks	Special Order
	41141-004	Push Rod, 42" Forks	Special Order
	41141-006	Push Rod, 48" Forks	\$40.00
22	41127	Exit Roller	\$3.00

Item	Part No.	Description	List Price
23	55007-001	Bushing	\$2.00
24	41241	Load Roller Bracket (Pair) (Incl. Items 5 and 23)	\$42.00
25	41126	Pivot Axle	\$8.00
26	41203	Washer	\$1.00
27	65081-020	Bearing	\$5.00
28	82283-1-D	Load Roller Assy, Red Ultra Poly On Aluminum Hub W/ Bearings	\$38.00
	82283-1	Load Roller Assembly, Black Ultra Poly On Steel Hub W/ Bearings	\$32.00
	82283-2	Load Roller Assembly, Nylon W/ Bearings	\$30.00
	82283-3	Load Roller Assy, Steel W/ Bearings	\$42.00
	GWK-PTH-LW	Load Wheel Kit, (2) Load Roller Assy W/ Bearings, Axles and Fasteners	\$74.95
	GWK-PTH-CK	Complete Wheel Kit, (2) Load Roller Assy, (2) Steer Wheel Assy W/ Bearings, Axles and Fasteners	\$124.95
29	41202	Load Roller Axle	\$10.00
30	41140	Lifting Link Pin	\$8.00
31	50007-021	Bolt	\$1.00
32	82203	Entry Roller	\$5.00
KITS	CR RPK	Roll Pin Kit	\$10.00

## Load Wheel Kit



### Note:

Please confirm measurements before ordering:

Load Roller 3.250" Diameter

Steer Wheel 8" Diameter

## Complete Wheel Kit



\*Non-discounting item

Prices subject to change without notice. All manufacturers' names, part numbers and descriptions are used for reference purposes only. We do not imply that any parts are the products of a particular manufacturer. Copyright © 2008 by GPS, Inc. All rights reserved.