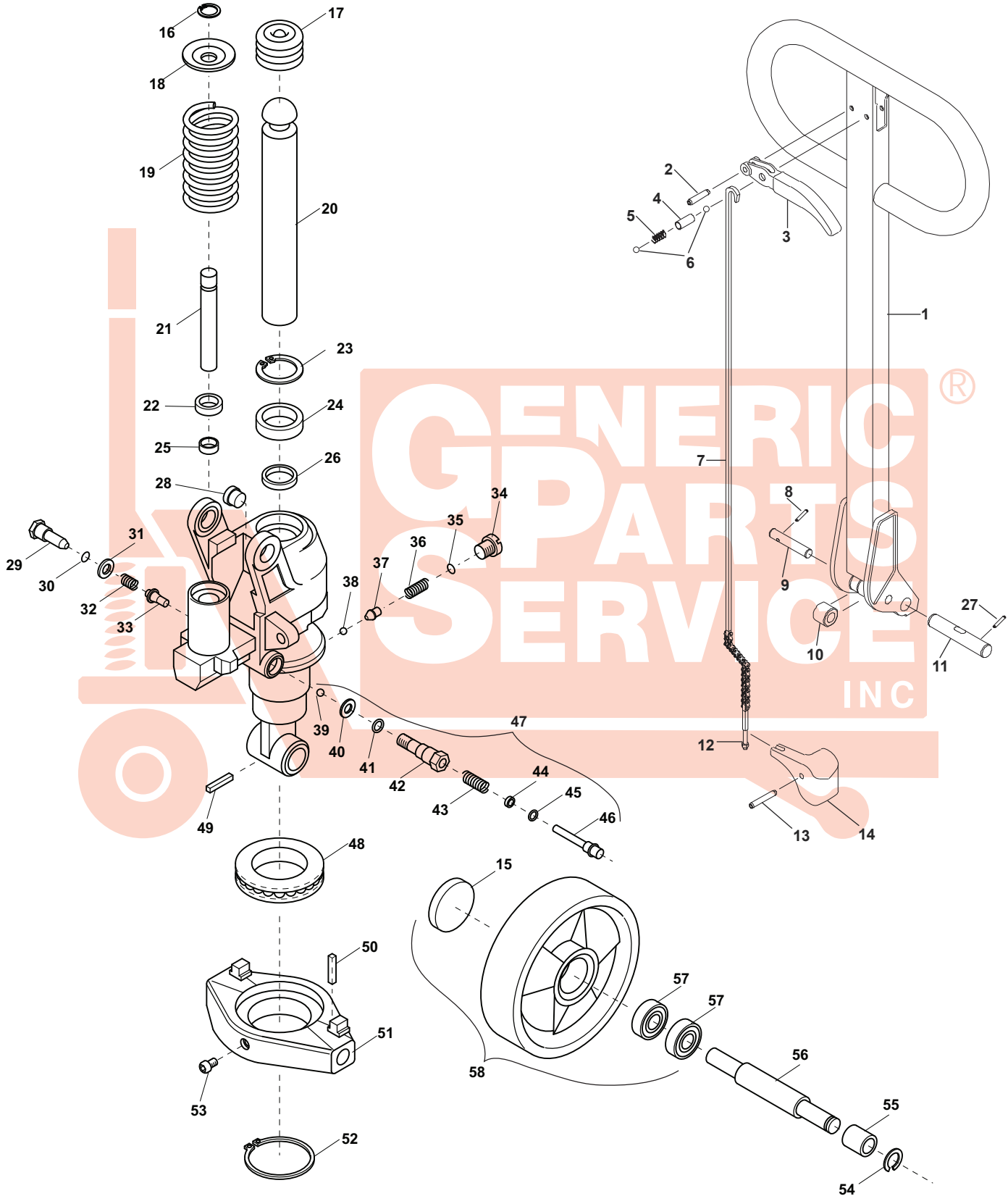


Lift-Rite Titan Series Hydraulic Unit

(PL-30277)



Lift-Rite Titan Series Hydraulic Unit

(PL-30277)

Item	Part No.	Description	Item	Part No.	Description
1	PL30276M	Handle Assembly	33	A 223935	Valve Cone
2	20105	Split Pin	34	221232	Overload Valve Screw
3	PL40274BDM	Control Lever	35	A 22032	O-ring
4	54140	Sleeve	36	221227	Over Load Spring
5	218182	Spring	37	221231	Guide Pin
6	20065	Chrome Ball	38	22055	Overload Ball
7	215775	Control Rod Assembly	39	A 20065	Valve Ball
8	20461	Split Pin	40	A 215288	Washer
9	47930	Axle	41	A 22032	O-ring
10	202755	Roller W/ Bushing	42	223977	Valve Body
11	222750	Axle	43	A 47071	Spring
12	21094	Adjusting Nut	44	A 49513	Spring Guide
13	A 220312	Locking Pin	45	A 22318	U-Cup
14	215128	Lowering Arm	46	A 47051	Piston
15	156623	Cover	47	215776	Lowering Valve Kit
16	20043	Locking Ring	48	213056	Trust Bearing
17	215803	Sleeve	49	220312	Roll Pin
18	215282	Washer	50	PL20269	Roll Pin
19	215156	Spring	51	245552	Trust Plate
20	215030	Lift Piston	52	21737	Locking Ring
21	215286	Pump Piston	53	27662	Grease Fitting
22	A 21060	Wiper Seal	54	20019	Locking Ring
23	A 20642	Locking Ring	55	161637	Spacer (Use with OEM 200965 only)
24	A 20066	Wiper Seal	56	220310	Axle
25	A 215866	U-Cup	57	22226	Bearing
26	A 215867	U-Cup	58	251189	Nylon Wheel Assy
27	20014	Locking Pin		160422	Polyurethane Wheel Assy
28	215913	Bushing		200965	Poly/Aluminum Wheel Assy
29	221586	Screw Plug		160433	Steel Wheel Assy
30	24213	O-ring			
31	A 219201	Washer	KIT A	243772	Seal Kit
32	A 39106	Spring		PM30277BN	Hydraulic Unit Complete