

Multiton TM, M & J Hand Control Hydraulic Unit

Note:

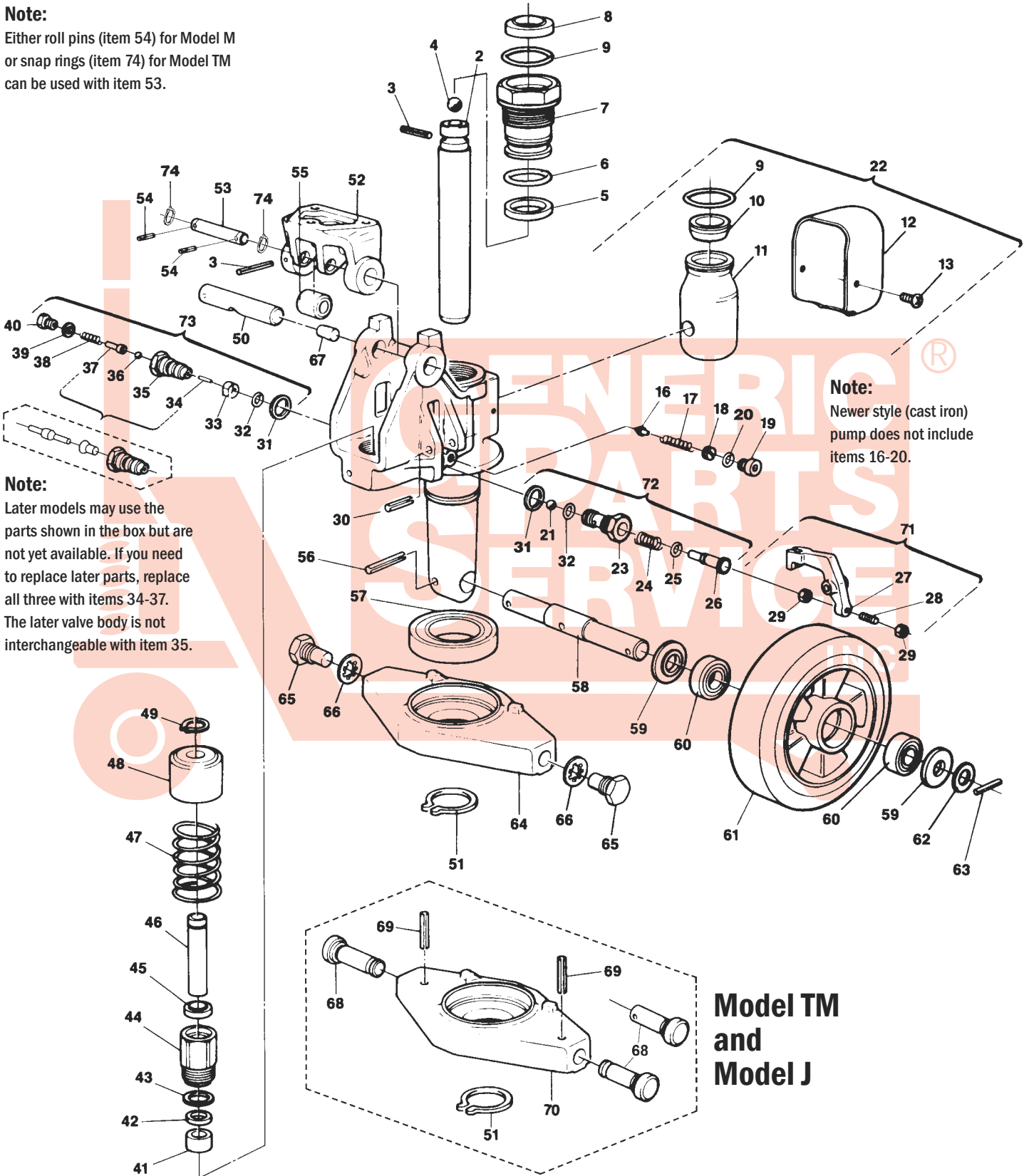
Either roll pins (item 54) for Model M or snap rings (item 74) for Model TM can be used with item 53.

Note:

Later models may use the parts shown in the box but are not yet available. If you need to replace later parts, replace all three with items 34-37. The later valve body is not interchangeable with item 35.

Note:

Newer style (cast iron) pump does not include items 16-20.



**Model TM
and
Model J**

Multiton TM, M & J Hand Control Hydraulic Unit

Item	Part No.	Description	List Price
2	MU 39879	Ram	\$49.00
3	MU 05750211	Roll Pin	\$0.50
4	MU 06750071	Ball	\$3.00
5 A B C	MU 200059-310	U-Cup	\$6.00
6 A B C	MU 200059-500	O-Ring	\$2.00
7	MU 39775	Top Nut	\$24.00
8 A B C	MU 200059-440	Scraper	\$10.00
9 A B C	MU 101003	O-Ring	\$3.00
10 A B	MU 21675	Filler Plug	\$8.00
11 A B	MU 21660	Reservoir	\$18.00
12 A	MU 38630	Cowling	\$8.00
13 A B	MU 04459023	Screw	\$0.50
16 A	MU 39002	Valve	\$12.00
17 A	MU 39005	Spring	\$3.00
18	MU 39004	Adjusting Screw	\$3.00
19	MU 200059-420	Screw Plug	\$4.00
20 A B C	MU 80008	O-Ring	\$2.00
21 A	MU 820209	Ball	\$1.00
22	MU 21660-A	Reservoir Assembly	\$36.00
23	MU 39928	Release Valve Body	\$39.00
24 A	MU 39940	Spring	\$2.00
25 A B C	MU 200059-550	O-Ring	\$2.00
26	MU 39926	Release Pin	\$12.00
27	MU 52684	Release Lever	\$12.00
28	MU 200061-110	Adjusting Screw	\$1.00
29	MU 80180	Nut	\$0.50
30	MU 200013-760	Roll Pin	\$1.00
31 B C	MU 200023-600	Washer	\$3.00
32 A B C	MU 200059-540	O-Ring	\$2.00
33	MU 40725	Spring	\$3.00
34	MU 200059-400	Valve Pin	\$1.50
35	MU 39929	Valve Body	\$28.00
36 A	MU 820206	Ball	\$2.00
37	MU 39927	Spring Guide	\$4.00
38 A	MU 39939	Spring	\$3.00
39 A B C	MU 100919	Washer	\$2.00
40	MU 39153	Screw Plug	\$8.00
41	MU 39778	Bushing	\$5.00
42 A B C	MU 200059-460	U-Cup	\$5.00
43 A B C	MU 39777	Washer	\$4.00
44	MU 39773	Pump Cylinder	\$18.00
45 A B C	MU 200059-450	Scraper	\$5.50
46	MU 39806	Piston	\$48.00
47	MU 38972	Spring	\$10.00
48	MU 38977	Spring Cap	\$12.00

Item	Part No.	Description	List Price
49 A B C	MU 820493	Snap Ring	\$1.25
50	MU 40057	Handle Pin	\$12.00
51	MU 06259058	Snap Ring	\$2.00
52	MU 91206	Bracket Assembly	\$49.00
53	MU 38613	Shaft	\$8.00
54	MU 05759015	Roll Pin	\$0.50
55	MU 38614	Roller	\$10.00
56	MU 05759018	Roll Pin	\$1.00
57	MU 06450077	Traverse Bearing	\$12.00
58	MU 90109	Steer Wheel Axle	\$12.00
59	MU 18968	Washer	\$1.00
60	MU 06450071	Bearing	\$5.00
61	MU 90100-01-P-HD	Steer Wheel Assembly, Red Ultra Poly On Aluminum Hub W/ Bearings	\$55.00
	MU 90164-ST	Steer Wheel Assembly, Poly On Nylon Hub W/ Bearings	\$38.00
	MU 90163	Steer Wheel Assembly, Nylon W/ Bearings	\$36.00
	MU 90100-01-S	Steer Wheel Assembly, Steel W/ Bearings	\$59.00
	GWK-TM-CK	Complete Wheel Kit, Incl. (2) Load Roller Assy, (2) Steer Wheel Assy, Bearings, Axles and Fasteners	\$124.95
62	MU 21353	Washer	\$0.50
63	MU 0575001	Roll Pin	\$0.50
64	MU 40948	Traverse (M Model)	Not Available
65	MU 20218	Shoulder Bolt	\$12.00
66	MU 05659038	Lock Washer	\$1.00
67	MU 200059-150	Bushing	\$1.00
68	MU 05250181	Shoulder Pin Set	\$18.00
69	MU 05750213	Roll Pin	\$1.00
	MU 200013-620	Roll Pin	\$0.50
70	MU 90032-11	Traverse	\$49.00
	MU 40089	Traverse	\$49.00
71	MU 40160	Activator	\$15.00
72	MU 43027	Plunger Assembly	\$40.00
73	MU 43026	Valve Assembly	\$36.00
74	MU 06259051	Snap Ring	\$1.00
KITS A	MU 200064-901-SUPER	Super Seal Kit	\$59.00
KITS B	MU 200064-901	Seal Kit	\$36.00
KITS C	MU 74701-SLIM	Slim Seal Kit	\$28.00
	HU MU 40146X	Rebuilt Hydraulic Unit - Exchange	*\$139.00
	MU 40146X-AM	New After-Market Replacement Pump	*\$129.

*Non-discounting item

Prices subject to change without notice. All manufacturers' names, part numbers and descriptions are used for reference purposes only. We do not imply that any parts are the products of a particular manufacturer. Copyright © 2008 by GPS, Inc. All rights reserved.