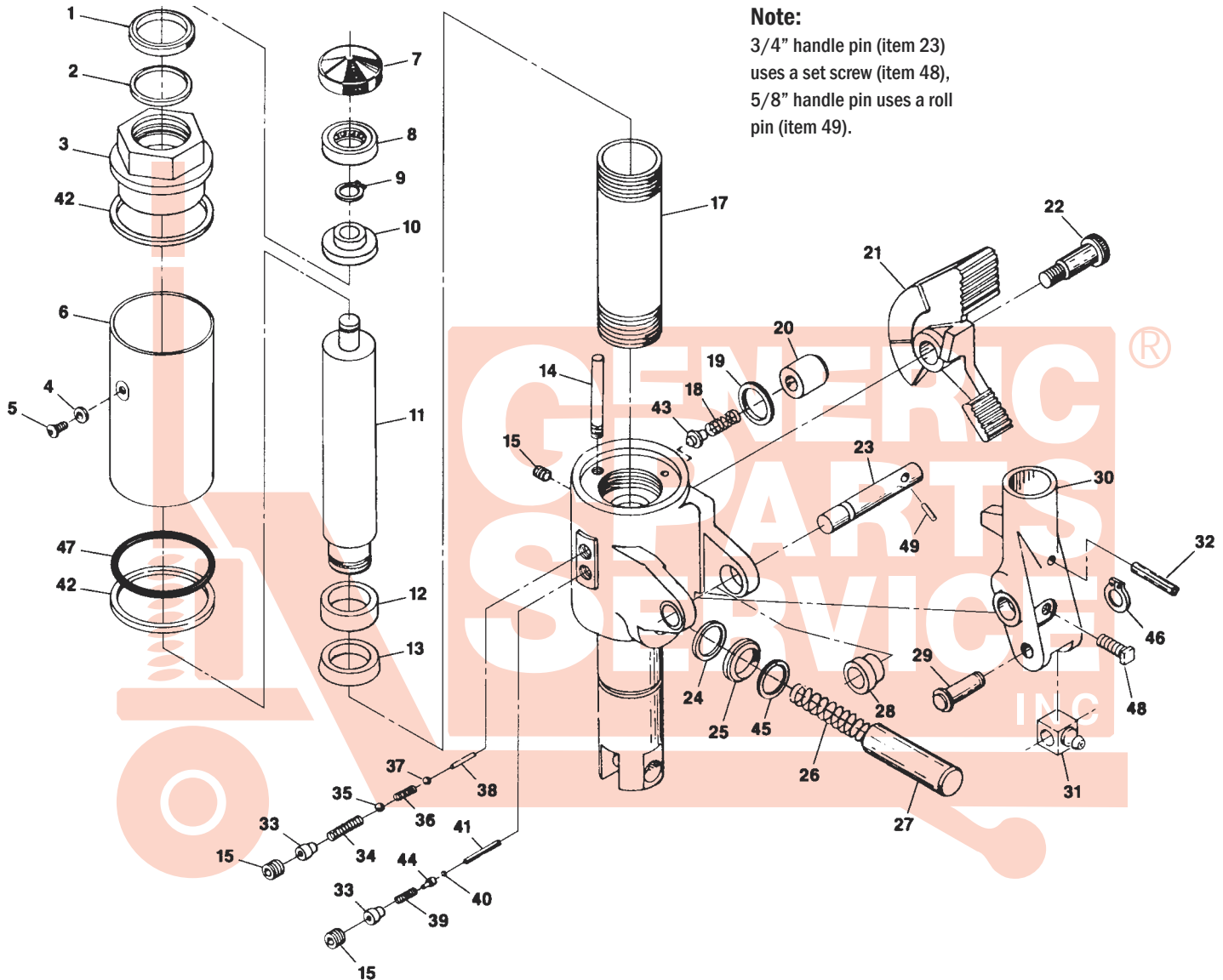


# Rol-Lift Series T and E Hydraulic Unit



## Valve Pins

### Valve Pins

### Giving You Trouble?

Rol-Lift upper and lower valve pins often need to be customized to fit your hydraulic unit. Call us and we will fax you a copy of the grinding procedure.

# RoL-Lift Series T and E Hydraulic Unit

Item	Part No.	Description	List Price
1	AB 1A	Scraper (3000 lb)	\$5.00
	CDE 1-33500	Scraper	\$5.00
2	AB 2A	Quad Ring (3000 lb)	\$4.00
	CD RL 1-30000	Quad Ring	\$2.00
3	RL 4-00066	Top Nut	Not Available
4	ABCDE RL 3-10200	Washer	\$2.00
5	RL 3-01000-02	Filler Plug	\$0.50
6	RL 4-00075	Reservoir Housing	Not Available
7	RL 3-27005	Bearing Cap	\$10.00
8	RL 3-70000	Thrust Bearing	\$12.00
9	RL 3-11024	Snap Ring	\$0.50
	RL 3-25751-06	Roll Pin	\$0.50
10	RL 3-27006	Thrust Collar	\$12.00
11	RL KIT-5145-TPTUM	Ram Assembly	\$20.00
12	A,B RL 14A	Bushing	\$5.00
	CDE RL 3-27018	Bushing	\$4.00
13	AB RL 15A	U-Cup (3000 lb)	\$10.00
	CDE RL 1-30500	U-Cup	\$12.00
14	RL 1-04500	Hole Plug, 1/8"	\$0.50
	RL 1-90001-02	Relief Valve	Not Available
15	C,G RL 1-04501	Screw Plug	\$4.50
17	RL 4-00077	Sleeve	*\$49.00
18	ABCD RL 3-20004	Spring (Foot Control Models)	\$0.50
	RL 3-20003	Spring ( Hand Control Models)	\$5.00
19	ABC RL 1-30001	Quad Ring, 1"	\$4.00
20	C RL 4-00079	Pin	\$5.00
	C RL 4-00078	Pin	\$5.00
21	RL 4-00057	Foot Pedal	Not Available
22	RL 3-00090-08	Bolt	\$7.00
23	RL 4-61035	Handle Pin, 5/8", Brass Bushing	\$8.00
	RL 4-00081	Handle Pin, 3/4", Nylon Bushing	\$5.00
24	ABCDE RL 1-30001	Quad Ring, 1"	\$4.00
	ABCE RL 1-32000	U-Cup, 13/16"	\$6.00
25	AB RL 35	Scraper, 1"	\$4.00
	ABC RL 1-33501	Scraper, 13/16"	\$5.00
26	A RL 3-20013	Spring (1" Piston)	\$5.00
	ACD RL 3-20005	Spring (13/16" Piston)	\$5.00
27	RL 4-60065	Piston, 1"	\$28.00
	C RL 4-00080	Piston, 13/16"	\$18.00
28	RL 3-27055	Bushing, 5/8", Brass	\$2.00
	AD RL 3-27020	Bushing, 3/4", Nylon	\$1.00

Item	Part No.	Description	List Price
29	RL 4-00082	Piston Pusher Shaft	\$5.00
30	RL 4-60072	Handle Socket (Foot Control Models)	\$82.00
	RL 4-60082	Handle Socket (Hand Control Models)*	\$49.00
31	C RL 4-00083	Piston Pusher	\$10.00
32	RL 3-25754-11	Roll Pin	\$1.00
33	ACDG RL 3-27009	Spring Guide	\$2.00
34	ACDG RL 3-20006	Spring	\$1.00
35	ABCDEG RL 3-30002	Ball	\$2.00
36	ABDG RL 3-20007	Spring	\$2.50
37	ABCDEG RL 3-30000	Ball	\$1.00
38	▲ RL 4-00084	Upper Valve Pin (Round)	\$2.00
39	ACDG RL 3-20008	Spring	\$1.00
40	ABCDEG RL 3-30001	Ball	\$2.00
41	▲ RL 4-00086	Lower Valve Pin (Square)	\$5.00
42	A RL 58A	Washer (3000 lb)	\$6.00
	CDE RL 3-26002	Washer	\$4.00
43	ACD RL 3-27008	Spring Guide	\$3.00
44	ACDG RL 3-27007	Ball Guide	\$2.00
45	RL 67	Retaining Ring (1" Piston)	\$8.00
	RL 3-11000	Retaining Ring (13/16" Piston)	\$3.00
46	RL 3-11001	Snap Ring	\$1.00
47	AB ▼ RL 1-40004	O-Ring (3000 lb)	\$3.00
	CDE ▼ RL 8B	O-Ring (5000 lb)	\$2.00
48	RL 3-04501-05-A	Set Screw Kit	\$1.00
49	RL 3-25750-07	Roll Pin	\$0.50
KITS A	RL T5AOK	Seal Kit (1-3/8" Lift Ram; 3000 lb, Some 4500 lb)	\$60.00
KITS B	RL 7-99003	Seal Kit (Slim Version of T5AOK)	\$42.00
KITS C	RL T5BOK-F-SUPER	Super Seal Kit (1-5/8" Lift Ram) Foot Control	\$70.00
KITS C	RL T5BOK-H-SUPER	Super Seal Kit (1-5/8" Lift Ram) Hand Control	\$70.00
KITS D	RL T5BOK	Complete Seal Kit (1-5/8" Ram)	\$49.00
KITS E	RL 7-99001	Seal Kit (1-5/8" Lift Ram)	\$29.00
KITS G	RL 7-99000	Seal Kit (Spring and Ball Kit)	\$12.00
	HU RL 5000-F	Rebuilt Hydraulic Unit - Exchange	*\$139.00
	HU RL 5000-H	Rebuilt Hydraulic Unit - Exchange	*\$139.00

▼ This is an option not found on all jacks.

▲ These parts must be ground to fit each individual pump in order to function properly. Each pump is different.

\*Non-discounting item

Prices subject to change without notice. All manufacturers' names, part numbers and descriptions are used for reference purposes only. We do not imply that any parts are the products of a particular manufacturer. Copyright © 2008 by GPS, Inc. All rights reserved.