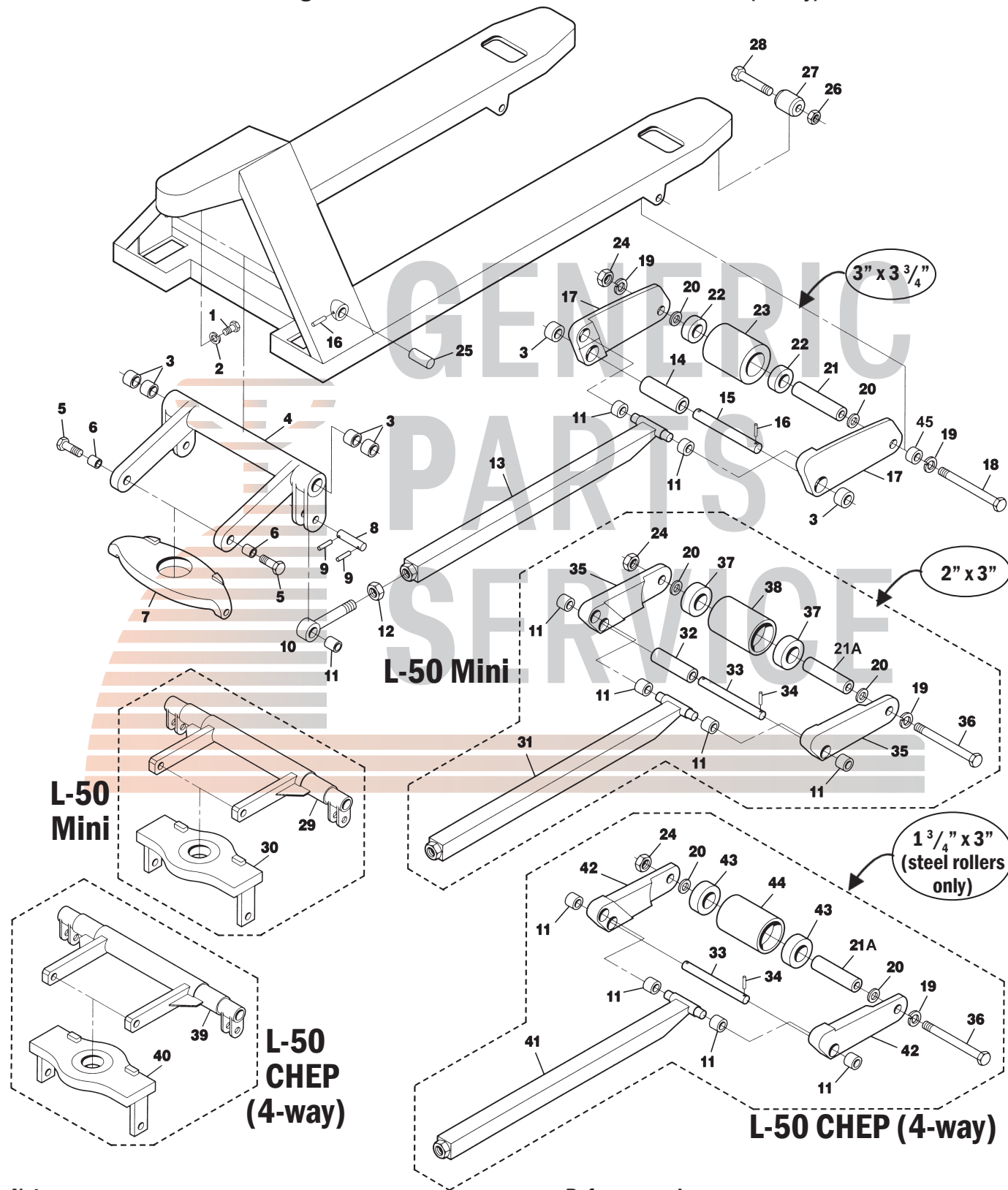


Lift-Rite (Big Joe) L-50 Frame

Including Low-Profile Jacks L-50 Mini and L-50 CHEP (4-way)



Note:
Parts between pallet jack models are not interchangeable.

Before you order:
To ensure that you get the correct parts, please verify the version of your L-50 pallet jack. The label on your jack will not identify the type, you must measure the load roller diameter.

Lift-Rite (Big Joe) L-50 Frame

Including Low-Profile Jacks L-50 Mini and L-50 CHEP (4-way)

Item	Part No.	Description
1	10232	Bolt
2	10232-A	Lock Washer
3	10203	Bushing
4	10201	Lifting Link, 20-1/2" Wide Jack
	10202	Lifting Link, 27" Wide Jack
5	10275	Shoulder Bolt (Hex Head)
6	10203	Bushing
7	10231	Traverse
8	10227	Pin
9	10228	Roll Pin
10	10226	Eye Bolt (Fine Thread with Bushings)
	10226-C	Eye Bolt (Coarse Thread with Bushings)
11	10206	Bushing
12	10224-A	Nut (Fine Thread)
	10224-A-C	Nut (Coarse Thread)
13	10224-36	Push Rod, 36" Forks (Fine Thread)
	10224-42	Push Rod, 42" Forks (Fine Thread)
	10224-48	Push Rod, 48" Forks (Fine Thread)
14	10220	Exit Roller
15	10219	Pivot Axle
16	10209	Roll Pin
17	10212-LR	Load Roller Brackets (Pair)
18	10215	Load Roller Axle Assembly (Includes Items 18-21, 24)
19	10217	Lock Washer
20	10216	Washer
21	LF 10214-C	Sleeve
21a	LF 10500	Sleeve
22	10214	Bearing
23	10210-P-A-D	Load Roller Assembly, Red Ultra-Poly On Aluminum Hub W/ Bearings
	10210-P-A	Load Roller Assembly, Black Ultra-Poly On Steel Hub W/ Bearings
	10210-N-A	Load Roller Assembly, Nylon W/ Bearings
	10210-S-A	Load Roller Assembly, Steel W/ Bearings
	GWK-L50-LW	Load Wheel Kit, (2) Black Ultra-Poly Load Roller Assemblies (70D), W/ Bearings, Axles & Fasteners
24	10218	Nut
25	10204	Lifting Link Pin
26	10223	Nut (Older Style)
27	10221	Entry Roller, 1-7/16" Diameter (Older Style, Standard and Mini Only)
	10281	Entry Roller, 1-15/16" Diameter (Newer Style, Standard and Mini Only)

Item	Part No.	Description
28	10222	Bolt (Older Style)
	10285	Nut, Bolt and Sleeve Assembly (Newer Style)
29	10202-M	Lifting Link, 27" Wide Jack (L-50 Mini)
30	10231-M	Traverse (L-50 Mini)
31	10224-36-M	Push Rod, 36" Forks (Fine Thread)
	10224-42-M	Push Rod, 42" Forks (Fine Thread)
	10224-48-M	Push Rod, 48" Forks (Fine Thread)
32	10220-M	Exit Roller
33	10219-M	Pivot Axle
34	10269	Roll Pin
35	10212-M	Load Roller Brackets (Pair)
36	10215-M	Load Roller Axle Assembly
37	10214-M-P	Bearing (Use with Poly Load Roller)
	10214-M-S	Bearing (Use with Steel Load Roller)
38	10210-M-P-A	Load Roller Assembly, Poly On Steel Hub W/ Bearings
	10210-M-S-A	Load Roller Assembly, Steel W/ Bearings
39	PF-10203	Lifting Link, 33" Wide Jack
40	10231-4-M	Traverse, 33" Wide Jack
41	C-10224-48	Push Rod, 48" Forks (Fine Thread)
42	C-10212-LR	Load Roller Brackets (Pair; with Bushings)
43	C-10214	Bearing
44	C-10210-A	Load Roller Assembly, Steel W/ Bearings
45	20212B	Bushing

Load Wheel Kit

