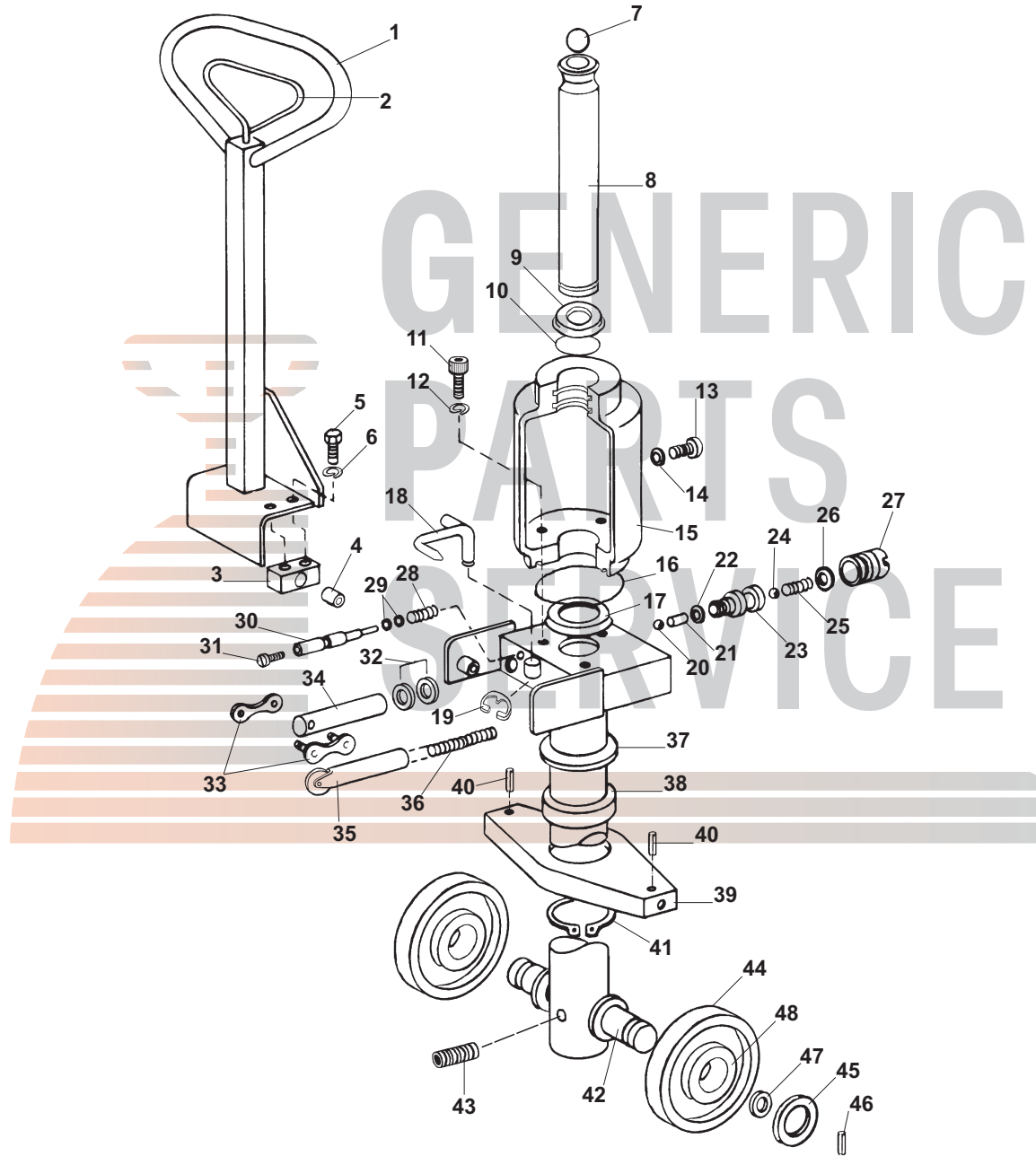


Magnum (Intrupa) 5000 Hydraulic Unit



Magnum (Intrupa) 5000 Hydraulic Unit

Item	Part No.	Description
1	105	Handle Assembly
2	106	Control Lever
3	107	Bearing Block
4	108	Bushing
5	109	Screw (Includes item 6)
6	110	Lock Washer
7	111	Ball
8	112	Ram
9	AB 114	Scraper
10	AB 115	O-Ring
11	117	Screw
12	117-1	Lock Washer
13	118	Screw Plug
14	AB 123	O-Ring
15	113	Tank Reservoir
16	AB 116	O-Ring
17	AB 131	Seal
18	120	Valve Pin
19	A 121	Locking Ring
20	AB 132	Ball
21	A 133	Roll Pin
22	AB 123	O-Ring
23	A 135	Valve
24	AB 136	Ball
25	AB 137	Spring
26	AB 138	O-Ring
27	A 139	Screw Plug
28	AB 122	Spring
29	AB 123	O-Ring
30	A 124	Valve Pin
31	A 125	Adjusting Screw

Item	Part No.	Description
32	A B 126	Quad Ring
33	A 128	Master Link
34	A 127	Pump Piston
35	129	Plunger
36	A 130	Spring
37	141	Spacer
38	142	Traverse Bearing
39	143	Traverse
40	542A	Roll Pin
41	144	Snap Ring
42	145	Steer Wheel Axle
43	146	Screw
44	148-A-HD	Steer Wheel Assembly, Red Ultra-Poly On Aluminum Hub W/ Bearings
	148-A-ST	Steer Wheel Assembly, Poly On Nylon Hub W/ Bearings
	147-A	Steer Wheel Assembly, Nylon W/ Bearings
	149-A	Steer Wheel Assembly, Steel W/ Bearings
	148-HD	Steer Wheel, Red Ultra-Poly On Aluminum Hub, use W/ OEM Style Bearings #48
45	151	Washer
46	152	Roll Pin
47	151-1	Bearing Retaining Washer
	151-2	Bearing Retaining Washer (Wet Application)
48	150	Bearing, OEM Style
KITS	A 153-SUPER	Super Seal Kit
KITS	B 153	Seal Kit
HU	HU MG 5000	Rebuilt Hydraulic Unit - Exchange