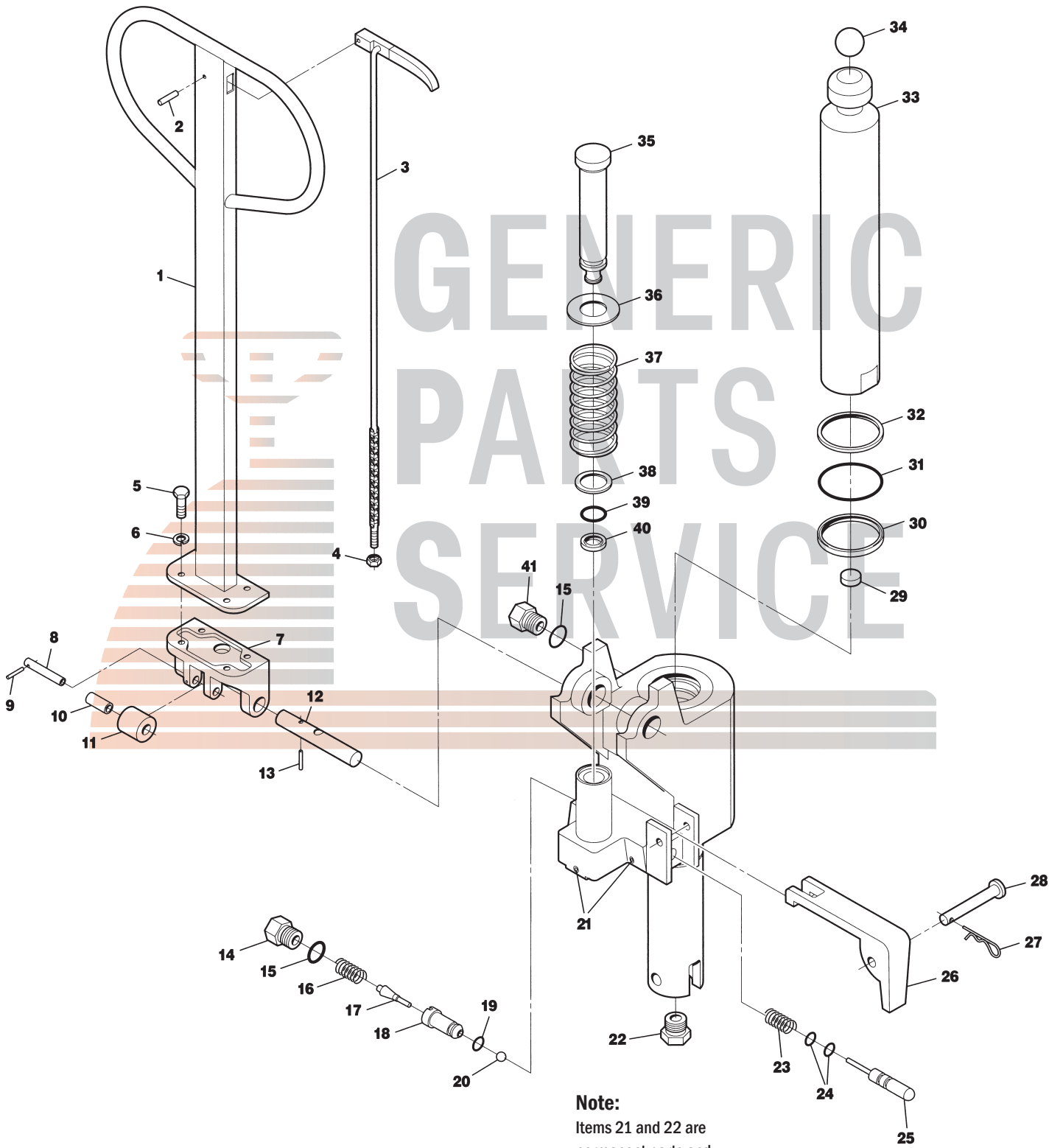


# Pallet Mule AA5000 and AA5500 Hyd. Unit



**Note:**  
Items 21 and 22 are permanent parts and are not intended to be removed.

# Pallet Mule AA5000 and AA5500 Hyd. Unit

Item	Part No.	Description
1	AA-68-Complete	Handle Assembly, Complete (Includes Items 1-4)
2	AA-70	Roll Pin
3	AA-69	Control Lever, Rod and Chain
4	AA-73	Adjusting Nut
5	AA-22	Bolt
6	AA-24	Lock Washer
7	AA-23-Complete	Handle Bracket Assembly (Includes Items 8 through 11)
8	AA-11	Pin
9	AA-12	Roll Pin
10	AA-10	Bushing
11	AA-09	Roller
12	AA-21	Pin
13	AA-20	Roll Pin
14	AA-14	Screw Plug
15	A AA-41	O-Ring
16	A AA-15	Spring
17	AA-16	Valve Cone
18	AA-17	Valve Cone Housing
19	A AA-18	O-Ring
20	A AA-19	Ball
21	Not Available	Plug (Not To Be Removed)
22	Not Available	Plug (Not To Be Removed)

Item	Part No.	Description
23	A AA-31	Spring
24	A AA-32	O-Ring
25	AA-34	Plunger
26	AA-35	Release Lever
27	AA-27	Clip Pin
28	AA-26	Pin
29	AA-38	Magnet
30	A AA-43	U-Cup
31	A AA-40	O-Ring
32	A AA-37	Scraper
33	AA-45	Ram
34	AA-44	Ball
35	AA-02.3	Piston
36	AA-03.3	Washer
37	AA-04	Spring
38	A AA-05.3	Scraper
39	A AA-06.3	O-Ring
40	A AA-07.3	U-Cup
41	AA-25	Filler Plug
KITS	A AA-76-5000	Seal Kit
	HU PU AA5000	Rebuilt Hydraulic Unit - Exchange

## Complete Wheel Kit

