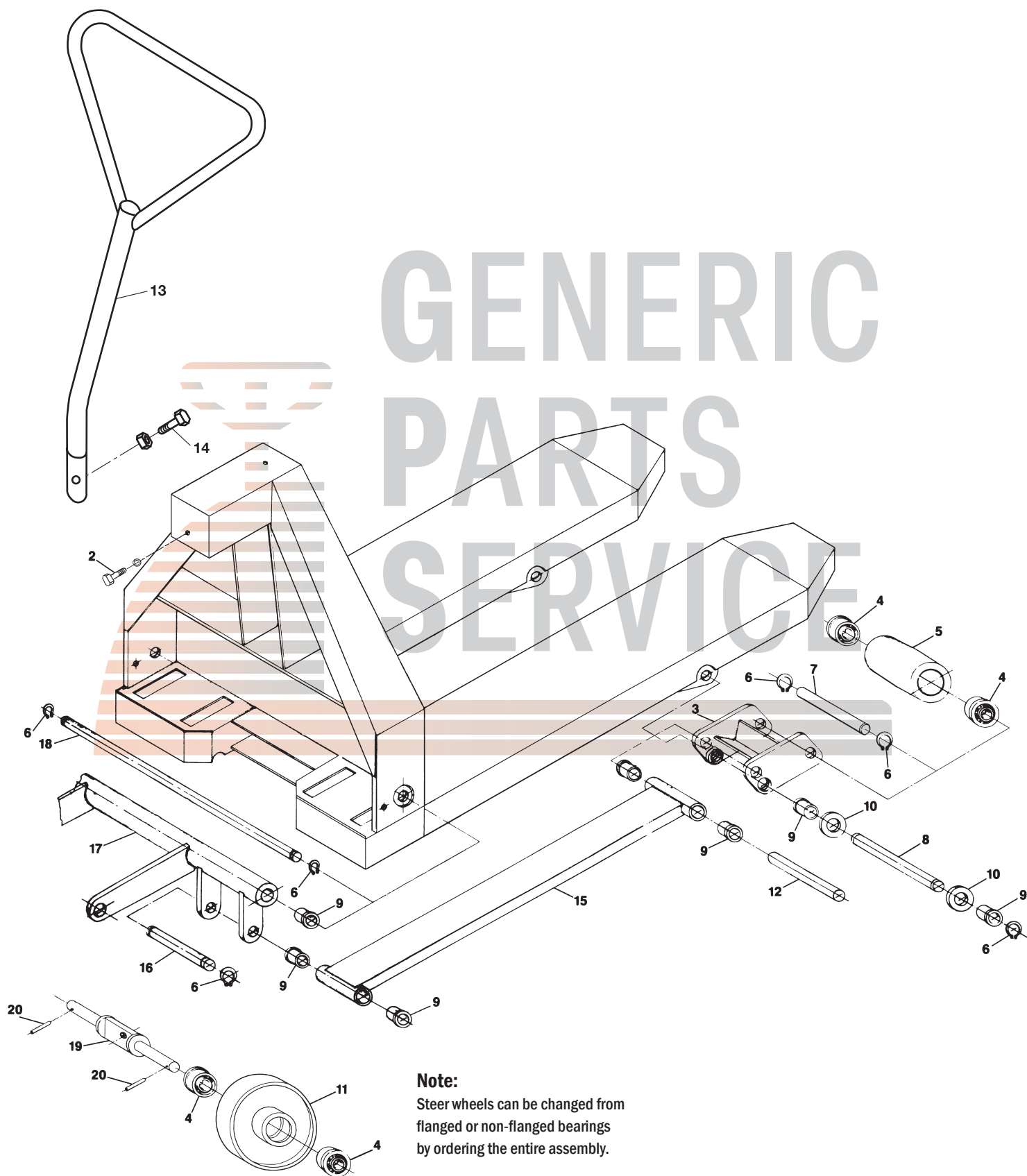


Palletmaster HSW Frame



GENERIC
PARTS
SERVICE

Note:
Steer wheels can be changed from flanged or non-flanged bearings by ordering the entire assembly.

Palletmaster HSW Frame

Item	Part No.	Description
2	00.30	Screw and Washer
3	01.01	Load Roller Bracket with Bushings
4	01.03	Bearing (Newer Style, No Flange)
	01.04	Bearing (Older Style, Flanged)
5	01.05-A-D	Load Roller Assembly, Red Ultra-Poly On Aluminum Hub W/ Bearings
	01.05-A	Load Roller Assembly, Black Ultra-Poly On Steel Hub W/ Bearings
	01.05-N-A	Load Roller Assembly, Nylon W/ Bearings
	01.05-A-FB	Load Roller Assembly, Red Ultra-Poly On Aluminum Hub W/ Bearings (Flanged Bearings)
	01.05-FB	Load Roller Assembly, Black Ultra-Poly On Steel Hub W/ Bearings (Flanged Bearings)
6	01.07	Snap Ring
7	01.08	Load Roller Axle
8	01.10	Pivot Axle
9	01.11	Bushing
10	01.12	Washer
11	01.13-A-HD	Steer Wheel Assembly, Red Ultra-Poly On Aluminum Hub W/ Bearings
	01.13-A-ST	Steer Wheel Assembly, Poly On Nylon Hub W/ Bearings
	01.13-N-A	Steer Wheel Assembly, Nylon W/ Bearings
	01.13-A-FB-HD	Steer Wheel Assembly, Red Ultra-Poly On Aluminum Hub W/ Bearings (Flanged Bearings)

Item	Part No.	Description
12	01.14	Push Rod Axle
13	01.22	Handle
14	01.23	Handle Bolt and Nut
15	03.00	Push Rod, 48" Forks
16	03.07	Pin
17	04.00	Lifting Link, 27" Wide Jack
18	04.04	Lifting Link Shaft, 27" Wide Jack
19	A1	Steer Wheel Axle
20	A11	Roll Pin

BRAKE PARTS (Below)

LB-1	Bushing
LB-2	Mounting Pin
LB-3	Snap Ring
LB-4	Threaded Eyebolt Assembly
LB-5	Locking Lever Mounting Yoke
LB-6	Locking Lever
LB-7	Spring
LB-8	Shoe Assembly
LB-8-A	Brake Shoe
LB-8-B	Hinge Bracket
LB-8-C	Shoe Spring

